



# Firmus Data Centre Project Health, Safety and Environment Management Plan

Document ID: 201103-SE-HSE-0001

## Authority

	Title	Name	Date
<b>Owner</b>	Project Manager	Scott Waters	26/03/2026
<b>Reviewer</b>	HSEQ Manager	Anthony Gollan	26/03/2026
<b>Approver</b>	Project Manager	Scott Waters	26/03/2026

## History

Revision	Date	Amended By (Name)	Details of Amendment
A	26/03/2026	Anthony Gollan	New Project Plan
B	10/04/2026	Anthony Gollan	Plan reviewed against site requirements

## Table of Contents

<b>1</b>	<b>General .....</b>	<b>7</b>
1.1	Scope of Work .....	7
<b>2</b>	<b>HSE Policies.....</b>	<b>8</b>
<b>3</b>	<b>Definitions .....</b>	<b>9</b>
<b>4</b>	<b>Planning.....</b>	<b>11</b>
4.1	Operational Risk Management.....	11
4.1.1	Construction Risk Assessment Workshop (CRAW).....	12
4.2	Legal and Other Requirements.....	13
4.3	Health, Safety, Environment Management Plan .....	15
4.3.1	Plan Intent .....	15
4.3.2	Plan Issue and Authority.....	15
4.3.3	Plan Objectives.....	15
4.3.4	Targets and Key Performance Indicators (KPI's) .....	16
<b>5</b>	<b>Implementation .....</b>	<b>17</b>
5.1	Culture.....	17
5.2	Senior Management Commitment .....	18
5.3	Security .....	18
5.4	Safety Requirements for Purchasing .....	18
5.5	Registers.....	19
5.6	Preventative Maintenance and Inspections.....	19
5.7	Subcontractors .....	19
5.8	HSE Management System Structure .....	21
5.9	Document and Data Control.....	21
5.10	Records and Records Management .....	21
5.11	Responsibility and Accountability .....	22
5.11.1	HSE Responsibilities for All SCEE Workers.....	22
5.11.2	Project Manager / Site Manager.....	23

5.11.3	Site HSE Advisor .....	24
5.11.4	Superintendent / Supervisor .....	25
5.11.5	Health and Safety Representatives .....	26
5.11.6	Foreman / Leading Hand .....	26
<b>6</b>	<b>Personnel Management .....</b>	<b>27</b>
6.1	Worker and Sub-Contractor Selection and Mobilisation .....	27
6.2	Pre-Employment Medicals .....	27
6.3	Induction, Training and Competency .....	28
6.4	SCEE Site Specific Induction.....	28
6.5	Visitor Induction and Controls.....	29
6.6	Fitness for Work (FFW) .....	29
6.7	HSE Discipline .....	30
6.8	Verification of Competency and Re-Training Frequency .....	30
<b>7</b>	<b>Consultation and Communication .....</b>	<b>31</b>
7.1	Pre-Start Meetings.....	31
7.2	Toolbox Meetings .....	31
7.3	HSE Promotion.....	32
7.4	Project Safety Committee .....	32
7.5	Management Meetings.....	33
7.6	HSE Notice Boards .....	33
7.7	Safety Incentives.....	33
7.8	HSE Alerts and Information.....	34
7.9	Health and Safety Issue Resolution .....	35
7.10	Signage .....	35
7.11	HSE Handover Report.....	35
<b>8</b>	<b>Hazard and Risk Management.....</b>	<b>36</b>
8.1	General.....	36
8.2	Hazard Identification .....	36

8.2.1	Hazards controlled in the Design Stage .....	36
8.3	Hazard Observation Reports (HazOb) .....	37
8.4	Hazard and Risk Assessment .....	37
8.5	Risk Control .....	38
8.6	Work Instructions .....	38
8.7	Safe Work Method Statements (SWMS).....	38
8.8	Take 5 .....	40
8.9	Job Hazard Analysis (JHA) .....	40
9	Control of Hazards / Risks .....	41
9.1	5 Star Commitment.....	41
9.2	Stop Work Authority.....	42
9.3	Family Star.....	42
9.4	Mobile Phones.....	43
9.5	Work Environment and Housekeeping .....	44
9.6	Personal Protective Equipment (PPE).....	44
9.7	Working in Heat.....	45
9.8	Permits to Work.....	46
9.9	Working at Heights .....	46
9.9.1	Falling Object Prevention and Encapsulation.....	47
9.10	Working from Ladders .....	47
9.11	Confined Spaces.....	48
9.12	Excavations and Penetrations .....	48
9.13	Isolation of Plant and Equipment .....	49
9.14	Hot Work .....	49
9.15	Drilling into Cable Ladder and Panels .....	50
9.16	Driving .....	50
9.17	Machinery and Vehicle Inspection .....	51
9.18	Cranes, Lifting and Rigging Equipment .....	52

<b>9.19 Forklift Operation .....</b>	<b>53</b>
<b>9.20 Loading and Unloading .....</b>	<b>53</b>
<b>9.21 Mobile Elevated Work Platforms (MEWP's)/Scissor Lifts.....</b>	<b>54</b>
<b>9.22 Scaffolding and Static Lines.....</b>	<b>54</b>
<b>9.23 Barricading .....</b>	<b>55</b>
<b>9.24 Inclement Weather .....</b>	<b>56</b>
<b>9.25 Traffic Management .....</b>	<b>56</b>
<b>9.26 Use of Power and Hand Tools .....</b>	<b>57</b>
<b>9.27 Banned Tools Onsite .....</b>	<b>57</b>
<b>9.28 Plant and Equipment Other.....</b>	<b>58</b>
<b>9.28.1 Safe Systems of Work.....</b>	<b>58</b>
<b>9.28.2 Plant Risk Assessment and Inspections.....</b>	<b>58</b>
<b>9.28.3 Installation/Commissioning/Demolition.....</b>	<b>59</b>
<b>9.28.4 Fit for Purpose .....</b>	<b>59</b>
<b>9.28.5 Plant and Equipment Controls.....</b>	<b>59</b>
<b>9.28.6 Maintenance/Inspection of Plant .....</b>	<b>60</b>
<b>9.28.7 Plant Record Details.....</b>	<b>60</b>
<b>9.29 Fire Prevention .....</b>	<b>60</b>
<b>9.30 Electrical Safety .....</b>	<b>60</b>
<b>9.30.1 Electrical Isolations .....</b>	<b>61</b>
<b>9.30.2 Working in the Vicinity of Live Power Lines .....</b>	<b>62</b>
<b>9.30.3 High Voltage Work .....</b>	<b>63</b>
<b>9.30.4 Temporary Power .....</b>	<b>64</b>
<b>9.30.5 Electric Shocks and Events.....</b>	<b>64</b>
<b>9.30.6 Electrical Fires.....</b>	<b>65</b>
<b>9.31 Noise Control and Occupational Hygiene Monitoring .....</b>	<b>65</b>
<b>9.32 Health Surveillance .....</b>	<b>65</b>
<b>9.33 Fibrous Materials.....</b>	<b>66</b>
<b>9.34 Simultaneous Work Activities .....</b>	<b>66</b>

9.35 Management of Change (MOC).....	67
9.36 Hazardous Substances .....	68
9.37 Risk Assessment and Control of Hazardous Substances .....	68
9.38 Storage and Disposal of Hazardous Materials.....	68
9.39 Hydrocarbon and Other Chemical Management.....	69
9.40 Hydrocarbon and Chemical Spill Management .....	69
9.41 Pollution /Emissions .....	70
9.42 Dust Management .....	70
9.43 Protection of Flora and Fauna .....	71
9.44 Soil and Water Conservation.....	71
9.45 Waste Reduction and Disposal .....	72
9.46 Rehabilitation .....	73
<b>10 Emergency Preparedness and Response .....</b>	<b>73</b>
10.1 First Aid & Emergency Equipment Risk Assessment.....	74
10.2 Australian Warning System .....	74
<b>11 Incident Management and Response .....</b>	<b>75</b>
11.1 First Aid and Medical Treatment .....	75
11.2 Critical Incident Management .....	76
11.3 Injury Management and Rehabilitation .....	76
11.4 Incident Reporting .....	77
11.5 Incident Investigation .....	78
<b>12 Monitoring, Auditing and Review.....</b>	<b>78</b>
12.1 Monthly HSE Performance Report.....	78
12.2 Workplace Inspections.....	79
12.3 Audits .....	80
12.4 HSE Non Conformance and Corrective Actions .....	81
<b>13 Appendix A - Responsibility Statements.....</b>	<b>Error! Bookmark not defined.</b>

## 1 General

### 1.1 Scope of Work

This HSE Management Plan has been developed for the Firmus Data Centre Project, which is located 23 Killafaddy Road & 66-92 St Leonards Road St Leonards, Tasmania.



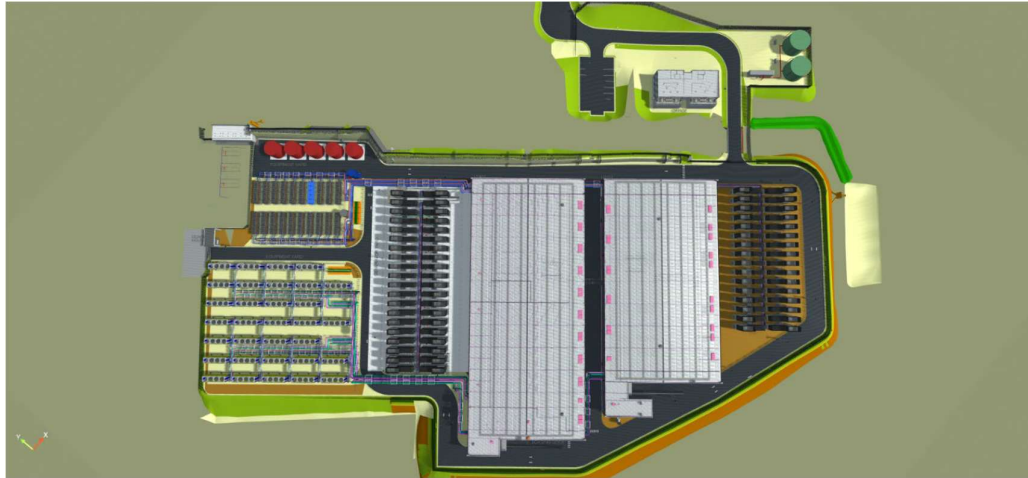
Project Location

The Project is Firmus Technologies' flagship AI Factory campus in Launceston, Tasmania, designed to anchor the world's first government-backed AI Factory Zone. Powered entirely by Tasmania's TasNetworks renewable energy, Southgate will deliver up to 48MW of liquid-cooled compute capacity, supporting a new class of Green AI Tokens for sustainable AI scaling.

The modular campus features 100% direct-to-chip cooling, consuming up to 60% less energy and costing up to 50% less to build than traditional data centres.

The overall project consists of two data centre buildings LST02 and LST03, which are joined via fibre cables to form a single operating compute facility, comprising a total gross floor area (GFA) of 13,807.5m<sup>2</sup> including 7,897.75m<sup>2</sup> of technical data hall floor space, plus mechanical, supporting, and 'front of house' administrative spaces.

Each building will be supplied by 32 off Power Units, consisting of a Power Train Unit (PTU) housing a Ring Main Unit, 22/0.4kV Transformer, UPS unit, complete with Li-ion Batteries, and a Generator unit, with mechanical services being supplied by 8 off Power units.



Concept Image

SCEE Scope of Work includes but not limited to electrical and instrumentation works including supply of labour, materials, supervision, plant, services, equipment and all other things that are or may be required to be performed by SCEE under and in accordance with the contract.

The purpose of this document is to clearly define a central and effective standard of strategies, systems and responsibilities to be applied throughout the Project for effectively managing safety and health.

## 2 HSE Policies

SCEE aspires to achieving a workplace free from damage or harm to people, equipment and the environment and policies to govern safety, business conduct, social, environmental and economic activities are integral to our activities.

SCEE adopts seven key policies to drive the sustainable development and application of HSE Management across our operations consisting of:

- Health and Safety Policy
- Environmental Policy
- Fitness For Work Policy
- Working Environment Awareness Policy
- Workplace Rehabilitation Policy
- Non Smoking Policy
- Sustainability

These policies are reviewed annually or whenever there is a significant change to SCEE operations or legislative requirements.

The policies are approved and signed by the CEO/Managing Director and are displayed in all SCEE offices and crib huts and communicated to all workers and supervisors at SCEE inductions.

SCEE Project Management shall ensure the requirements of all HSE policies are communicated to all personnel.

- Refer:
- SCEE-BS-HS-POL-0001 Health and Safety Policy
  - SCEE-BS-HS-POL-0002 Environmental Policy
  - SCEE-BS-HS-POL-0004 Working Environment Awareness Policy
  - SCEE-BS-HS-POL-0005 Non Smoking Policy
  - SCEE-BS-HS-POL-0006 Sustainability Policy
  - SCEE-HR-HR-POL-0004 Fitness for Work Policy
  - SCEE-HR-IM-POL-0001 Workplace Rehabilitation

### 3 Definitions

Term / Acronym	Definition
ALARP	As Low As Reasonably Practicable. A risk management principle based on reducing risk.
AS / NZS	Australian / New Zealand Standards
Aspect	The element of activities, product or service that can affect the environment
BAC	Blood Alcohol Content
Competent Person	Refers to a person who has acquired through training, qualification or experience, the knowledge and skills required to do a designated task competently.
Consequence	The outcome of an event or situation expressed as the extent of harm.
Controls	Measures that reduce or eliminate a hazard.
CPR	Cardiopulmonary Resuscitation which is an emergency medical procedure for a victim of cardiac arrest or, in some circumstances, respiratory arrest.
CRA	Construction Risk Assessment
Critical Incident	Any situation faced by an individual that causes him or her to experience unusually strong emotional and/or physical reactions that can interfere with their ability to productively carry on with their everyday lives and which has a detrimental impact on the efficient productive operations of the Project. Also considered to be any situation that could adversely affect SCEE or Hansen Yuncken, such as public perception and/or outrage.
Datatrack	SCEE's software platform used for data tracking, management, and reporting.
EAP	Worker Assistance Program
EMS	Environmental Management System
ERT	Emergency Response Team
Evaluate	To ascertain or set up the amount or value
Event	A collective term which includes instances of actual or potential injury to SCEE workers and/or contractors, damage to plant and equipment or the environment

Term / Acronym	Definition
FAC	First Aid Case.
FFW	Fitness For Work
Fibrous Material	Any asbestos cement product or asbestos in the natural geology.
GPO	General Purpose Outlet
Hazard	A source or a situation with a potential for harm in terms of human injury or ill-health, damage to property, damage to the environment or a combination of these. (ISO 45001)
Hazardous Substance	A substance that following worker exposure can have adverse effect of health. A substance meeting the classification criteria specified in the Approved Criteria for Classifying Hazardous Substances (NOHSC: 1008 (2004)).
HSE	Health, Safety and Environment
HSEMS	Health, Safety and Environmental Management System
HSMS	Health and Safety Management System
HY	Hansen Yuncken
HV	High Voltage
Impact	Any change either adverse or beneficial resulting from Impact resulting from an aspect
Incident	Any occurrence that may have had the potential to cause illness or damage to persons, property, plant or the environment.
JHA	Job Hazard Analysis
Job Hazard Analysis (JHA)	An analysis of a job or task to identify job steps, hazards and control measures to reduce risks to acceptable levels.
LTI	Lost Time Injury.
LTIFR	Lost Time Injury Frequency Rate
LV	Low Voltage
Manual Handling	Any activity requiring the use of force exerted by a person to lift, lower, push, pull, carry or otherwise move, hold or restrain a person, animal or thing.
MEWP	Mobile Elevated Work Platform
MoC	Management of Change
MTI	Medical Treatment Injury
MTIFR	Medical Treatment Injury Frequency Rate
NCR	Non-Conformance Report
PEFA	Pre-employment Functional Assessments
PPE	Personal Protective Equipment
RCD	Residual Current Device
Risk	In relation to any potential injury or harm, the likelihood and consequence of that injury or harm occurring. (ISO 45001)
RWC	Restricted Work Case
SCEE	SCEE Electrical Pty Ltd
SDS	Safety Data Sheet (formerly MSDS)
Shall	Shall is to be understood as mandatory.
Should	Should is to be understood as recommended but not mandatory
SMP	Structural, Mechanical, Piping

Term / Acronym	Definition
SWMS	Safe Work Method Statement
Worker	A person is a worker if the person carries out work in any capacity including work as — a) an employee; or b) a contractor or subcontractor; or c) an employee of a contractor or subcontractor; or d) an employee of a labour hire company who has been assigned to work in the person’s business or undertaking; or e) an outworker; or f) an apprentice or trainee; or g) a student gaining work experience; or h) a volunteer; or i) a person of a prescribed class.
WI	Work Instruction
WLL	Working Load Limit (Rated Capacity (formerly SWL))

## 4 Planning

### 4.1 Operational Risk Management

It is a requirement that all SCEE operational sites implement HSE hazard and risk management processes across their scope of work, and that those processes are applied to all activities that SCEE can control or influence.

HSE hazards, risks and opportunities must be assessed, prioritised and managed as appropriate to the nature, scale and potential impact of operations and activities both individually and as a whole.

The areas of concern that the risk management process should control are:

- Protecting the health and safety of the general public
- Protecting the health and safety of all personnel
- Protecting the environment
- Protecting plant, equipment and property
- Protecting the business

SCEE’s systematic risk management process provides assurance that all planned objectives will be achieved within an acceptable level of risk. The SCEE Risk Management framework is designed in 5 steps supported by consultation /communication and monitoring / review of each step in line with continual improvement methods.

**Refer:**                    [SCEE-BS-RM-PRO-0001 Corporate Risk Management Procedure](#)  
                                  [SCEE-BS-RM-PRO-0002 Operational Risk Procedure](#)

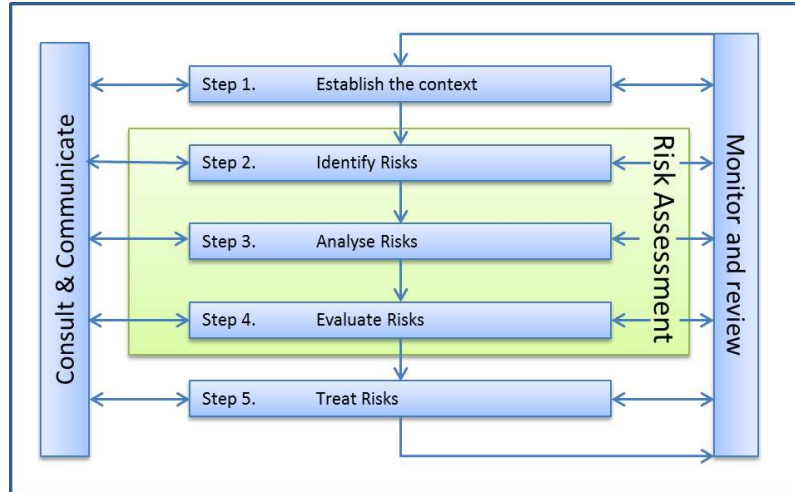


Figure 1: Risk Management Framework

#### 4.1.1 Construction Risk Assessment Workshop (CRAW)

Prior to project mobilisation a Construction Risk Assessment Workshop (CRAW) will be convened. The risk assessment workshop will identify all aspects of the work scope, any potential environmental impact activities which have potential environmental implications, identify hazards and risks and detail specific controls to eliminate or minimise the risk using the ALARP principle.

In most states, statutory requirements exist for the control of known hazards. Examples of these are;

- Approved Codes of Practice
- advisory standards
- safety data sheets
- guidance notes
- Australian Standards

Where the above documents exist, the controls referenced in those documents shall be incorporated in to the risk assessment.

The construction risk assessment (CRA) will be documented using the SCEE Construction Risk Assessment Template and the Environmental Aspect & Impact Register or equivalent Hansen Yuncken specified document.

The Construction Risk Assessment shall include evaluation of potential health hazards, including biological, physical, and chemical/atmospheric contaminants. This assessment must be carried out by a competent person holding, at a minimum, a Certificate IV in Work Health and Safety.

The assessment will identify potential worker exposure levels and outline the controls and management processes for each identified health risk. Where necessary, ongoing evaluation and monitoring shall be conducted by a suitably qualified Occupational Hygienist.

The risk assessment shall be reviewed following mobilisation to reflect a greater understanding of the environment and work scope. The CRA shall become the projects hazard and risk register and be maintained for the life of the project. The CRA and Environmental Aspect and Impact register shall be displayed in all offices and crib huts.

Refer: [SCEE-BS-RM-TEM-0006 Construction Risk Assessment](#)  
[SCEE-BS-RM-PRO-0002 Operational Risk](#)  
[SCEE-BS-RM-TEM-0002 Risk Criteria Matrix](#)  
[SCEE-BS-HS-TEM-0016 Environmental Aspect & Impact Register](#)

## 4.2 Legal and Other Requirements

SCEE Management shall be aware of the legislative obligations applicable to this Project and the importance of complying and exceeding minimum requirements where practicable. These obligations include the conditions of regulatory approvals as well as applicable legislation, Codes of Practice and Australian Standards. All personnel will be made aware of their duty of care obligations and other key areas of legislation applicable to the Project during the site induction.

Legislation relevant to this project may include but is not limited to the following:

Jurisdiction	Legislative Reference
Tasmania	Work Health and Safety Act 2012
Tasmania	Work Health and Safety Regulations 2012
Tasmania	Electricity Safety Act 2022
Tasmania	Environmental Management and Pollution Control Act 1994
Tasmania	Aboriginal Heritage Act 1975
Tasmania	Historic Cultural Heritage Act 1995
Tasmania	Workers Rehabilitation and Compensation Act 1988
Tasmania	Environmental Management and Pollution Control (Waste Management)
Tasmania	Environmental Management and Pollution Control (Noise) Regulations
Tasmania	State Policies and Projects Act 1993 ( <i>if applicable</i> )
Tasmania	Dial Before You Dig (BYDA) requirements
Tasmania	Code of Practice - How to Manage Work Health and Safety Risks
Tasmania	Code of Practice - Managing the Work Environment and Facilities
Tasmania	Code of Practice - Managing the Risks of Plant in the Workplace
Tasmania	Code of Practice - Hazardous Manual Tasks
Tasmania	Code of Practice - Construction Work
Tasmania	Code of Practice - Excavation Work
Tasmania	Code of Practice - Demolition Work
Tasmania	Code of Practice - Managing the Risk of Falls at Workplaces
Tasmania	Code of Practice - Scaffolding Work
Tasmania	Code of Practice - Managing Electrical Risks in the Workplace

Tasmania	Code of Practice - Working in the Vicinity of Overhead and Underground
Tasmania	Code of Practice - Managing Noise and Preventing Hearing Loss at Work
Tasmania	Code of Practice - Confined Spaces
Tasmania	Code of Practice - First Aid in the Workplace
Tasmania	Code of Practice - How to Manage and Control Asbestos in the Workplace
Tasmania	Code of Practice - How to Safely Remove Asbestos
Tasmania	Code of Practice - Managing Risks of Hazardous Chemicals in the Workplace
Tasmania	Code of Practice - Labelling of Workplace Hazardous Chemicals

Code	Reference
ISO 9001	Quality Management Systems
ISO 14001	Environmental Management Systems
ISO 45001	Occupational Health and Safety Management Systems
AS/NZS 3000	Electrical Installations (Known as the Australian/New Zealand Wiring Rules)
AS 1319-1994	Safety Signs for the Occupational Environment
AS 4775-2007	Emergency eyewash and shower equipment
AS 3745	Planning for emergencies in Facilities
AS 1715	Selection, Use and maintenance of respiratory protective equipment
AS 1850	Portable Fire extinguishers = classification rating and performance testing
AS 1892	Portable Ladders
AS 2293	Emergency Lighting
AS 3001	Electrical Installations – Connectable Electrical Installations and Supply Arrangements
AS 4736	Safety of Portable Inverters
AS 4836	Safe working on or near low-voltage electrical installations and equipment

SCEE Management shall be responsible for making all staff and subcontractors aware of all of the requirements of the SCEE HSE Management Plan, procedures, specifications and all legal and other requirements. SCEE Project Management shall be responsible for ensuring that all, personnel including subcontractors adhere to these requirements when performing work.

SCEE Management and Supervision personnel associated with the project shall ensure they have a working knowledge of legal and other requirements applicable to their work scope and work location. SCEE Management shall maintain and provide timely access to applicable legislation and other reference documents when the information is required or requested.

Refer: [SCEE-BS-HS-PRO-0019 HSE Compliance Obligations Procedure](#)

## 4.3 Health, Safety, Environment Management Plan

### 4.3.1 Plan Intent

This HSEMP has been developed to ensure SCEE's activities on the project are conducted in a manner that protects the health safety and environment of all personnel, including contractors and visitors and maintain compliance with all legal and regulatory requirements. This HSEMP details the actions that are required to manage our HSE obligations and requirements and incorporates the specific requirements of:

- Relevant Legislation, Code of Practice, Standards and Industry requirements
- SCEE HSE Management System requirements and performance expectations
- Hansen Yuncken HSE Management System requirements and performance expectations

The success of the Project depends upon the combined capability and contribution of all persons employed on the Project. SCEE is dedicated to fostering a work environment that challenges, enriches and rewards each individual.

Refer: [PLN-CORP-HSE-001 Hansen Yuncken WHS Management Plan](#)

### 4.3.2 Plan Issue and Authority

This HSEMP is a mandatory document under the SCEE HSEMS and a deliverable for the Firmus Data Centre Project. The HSEMP is issued under the authorisation of the Project Manager and SCEE Corporate HSE Department and the procedures, practices and methods of control defined herein must be adhered to by all personnel and cannot be formally amended without the agreement of the Corporate HSE Department and Project Manager.

This project HSEMP will be reviewed within 2 months of project mobilisation and site works commencing.

The project HSEMP will be subject to periodic review and when required, amended to reflect changes in contractual or management requirements or to correct any disparity identified during monitoring, auditing or review activities.

### 4.3.3 Plan Objectives

The objectives of this HSEMP are to:

- Provide a uniform approach to the management of HSE requirements across all SCEE work locations.
- Define responsibilities and accountabilities for all personnel to ensure effective implementation of the HSE Management System
- Establish and support relationships between the HSE management system, site procedures and relevant standards
- Pro-actively facilitate communication with consultation and participation by all managers, supervisors, and personnel in HSE matters relevant to their role

- Identify, assess and control all workplace hazards and risks within our control
- Ensure processes for the effective management and reporting of HSE incidents and effective management and rehabilitation of injured personnel.
- Facilitate the continual improvement of HSE performance and standards of managers, supervisors, and all personnel.
- Provide information for personnel at all levels to meet responsibilities and deliverables
- Facilitate methods to achieve and improve, goals, targets, KPI's and objectives

### 4.3.4 Targets and Key Performance Indicators (KPI's)

The SCEE Project HSE targets are:

Performance Objective	Source Document	KPI	Target
Maintain compliance with all SCEE and Hansen Yuncken HSE management plans and procedural requirements throughout the contract.	SCEE Project HSEMP Hansen Yuncken Project HSEMP	Results from SCEE and Hansen Yuncken audits.  SCEE and Hansen Yuncken HSE Reports	Min. of 85% compliance on any audit  100% compliance with HSE reporting requirements  HSE/PM/Superintendent – 1 Weekly Site Inspection  Supervisors - 1 Star Inspection per day  HSE – 1 Star Inspection per day
Maintain compliance with inspection and audit schedules.	SCEE-BS-HS-STR-0003 HSE Audit Schedule  Corrective Action Register / STEMs	Percentage of HSE inspections completed.  Percentage of audits completed.  Percentage of Non-conformances & observations closed out within the agreed timeframe.	100% of inspections conducted to schedule  100% of audits conducted to schedule  100% Non-conformances & observations closed out within agreed time frames
Ensure all personnel are adequately trained and competent for the work they are to undertake.	Project Training Plan/Matrix  Project Training Matrix / STEMs  Project Training Matrix / STEMs	Percentage of personnel trained according to the project training plan  Percentage of personnel performing work, for which they are not trained, licensed or verified as competent  Percentage of personnel trained in Provide First Aid	90% of training conducted to schedule  0% of personnel not trained licensed or VOC'd to perform role tasks  5% of all personnel trained in Provide First Aid
Achieve the contract goal of a workplace free from harm and damage to the health & safety of personnel, the environment and equipment.	SCEE-BS-HS-STR-0001 Objectives and Targets	No. of Hazards reported by SCEE & it's subcontractors  No. of injuries reported for SCEE & its subcontractors  No. of incidents reported for SCEE & it's subcontractors  No. of environmental incidents reported.  No. of P&E damage events reported	3 HazOb reports per site employee per week, 1 per site Management per week, 5 per site HSE position per week  Nil MTI, RWC or LTI injuries  Investigations completed within 7 days (exception for TapRoot / ICAM Investigations)  Nil reportable environmental incidents

Maintain strong environmental performance standards.	SCEE-BS-HS-STR-0001 Objectives and Targets SCEE Project HSEMP Hansen Yuncken Project HSEMP	No. Environmental Toolbox Topics  No. of SWMS / JHA's with environmental issues considered  No. environmental incidents reported	2 x Environmental Toolboxes  100% of SWMS/JHA's with environmental issues/controls included.  Nil significant environmental incidents
Senior Management Commitment		No. Site visits by Senior Management  WHS reports reviewed by Senior Management and reported back to site.	Minimum 1 x Site Visit every 3 months by either Corporate HSEQ team, Operations or Executive Staff.

SCEE Executive Management develops and endorses HSE Objectives and Targets annually across the business to drive and improve HSE performance. These are available on the SCEE Intranet and progress against these targets is monitored and communicated periodically to site.

Refer: [SCEE-BS-HS-STR-0001 HSE Objectives and Targets](#)

## 5 Implementation

Project Management shall ensure all workers are informed of their individual responsibilities and duties under this Plan. This shall form part of the formal induction program implemented on site.

Key personnel shall sign responsibility statements to acknowledge an understanding and commitment to their responsibilities under this HSEMP. Responsibility statements to be signed by key project personnel are incorporated in this HSEMP as Appendix A.

HSE Packs shall be established in the field containing relevant information for the project. The packs as a minimum shall include the HSE Management Plan, CRAW, Relevant Procedures and Work Instructions. These packs shall be located at each work front and made available to all SCEE workers and Hansen Yuncken when requested.

Refer: [Appendix A - Responsibility Statements](#)

### 5.1 Culture

Project Management will create and sustain a culture that supports the objectives of the Health and Safety Management System (HSMS), based on:

- A belief in the company's desire to improve HSE performance
- Motivation to improve personal HSE performance
- Acceptance of individual responsibility and accountability for HSE performance
- Participation and involvement at all levels in HSEMS development
- A commitment to an effective HSEMS

The implementation of safety and health management on the project shall be in accordance with a fair and just approach. At risk behaviours are not to be tolerated and the proactive re-enforcement of positive behaviours shall be a focus on the project.

## 5.2 Senior Management Commitment

Senior management is committed to implementing and continuously improving the WHS management system, ensuring alignment with legal obligations and organisational safety objectives. HSE performance reports are produced regularly, reviewed by senior leadership, and communicated to site management to monitor progress against objectives and targets.

All senior managers, site managers, and supervisors complete WHS training focused on due diligence and legal obligations, as outlined in SCEE-TR-TD-GUI-0001 SCEE Global Training Needs Analysis. This ensures clear understanding of WHS roles and responsibilities across all levels of management.

Senior managers conduct regular site visits to engage with site teams and workers on WHS matters. These visits, along with WHS performance and training, are tracked as part of organisational KPIs.

Refer: [SCEE-TR-TD-GUI-0001 SCEE Global Training Needs Analysis](#)

## 5.3 Security

SCEE Project Management shall implement a security program that consists of the following:

- Only nominated workers (nominated by the Project Manager or designated persons) have access to office, storage areas and material and equipment sites
- All offices, storage areas, material and equipment sites shall be kept locked after hours with keys issued to nominated persons
- All personnel shall be made aware at their induction of the requirement to secure and return all plant equipment and materials to designated storage locations at the end of each workday
- Supervisors shall ensure that there are no photographs taken of any part of the project that may conflict with legal obligations or requirements regarding the media or local community.

## 5.4 Safety Requirements for Purchasing

Equipment and material specifications should be in place for all types of plant, equipment and materials to ensure compliance with the relevant site and legislative requirements and good industry practice.

Equipment and material specifications shall be clearly communicated to procurement personnel to ensure that equipment and material purchases (including chemicals) satisfy SCEE, Regulatory and Hansen Yuncken specifications. Information concerning prohibited tools shall be provided to the procurement department.

All chemicals that are purchased by SCEE must be approved by Hansen Yuncken before being used on site, have an up to date Safety Data Sheet (SDS) and be stored appropriately on site.

Formal inspections of all equipment and materials with the potential to impact worker safety or health shall be conducted when it arrives at a project to check compliance against the

purchasing specifications. Where appropriate, consideration shall also be given to using alternative equipment or materials, which are safer and less hazardous than those being currently used.

## 5.5 Registers

Compliance registers shall be maintained for all relevant activities in accordance with applicable health and safety legislation and site requirements.

The below registers will be maintained in Stems

Register Name	Comments
Actions Register	Maintained in STEMS
Hazard Register	Maintained in STEMS
Event Register	Maintained in STEMS

Refer: [SCEE-BS-HS-TEM-0065 SCEE Electrical Master HSE Registers](#)

## 5.6 Preventative Maintenance and Inspections

A complete list of all mobile and portable plant on the Project will be maintained in the SCEE asset management system. This list will form the basis of the formal maintenance log and maintenance and inspections will be scheduled as a preventative measure for plant and vehicles.

The maintenance system will be supported on a daily basis through the mandatory pre-start checks required to be completed by all operators. The overall preventative maintenance process is actioned through:

- Vehicle maintenance & Inspections
- Plant maintenance & Inspections
- Quarterly Inspection and tagging of electrical, lifting equipment, ladders, harnesses and lanyards
- RCD Operational Checking
- Pre-start Checks on all vehicles, plant and equipment
- Fire Extinguisher audits
- Training needs analysis

Copies of all inspections are recorded in the asset management system, which the Site Manager and HSE Advisor can review at any time and, in collaboration with the site Supervisors, assess the upcoming impact of maintenance activities on the work activities and schedule according to priorities and legislative compliance.

## 5.7 Subcontractors

In assessing and awarding subcontracts the SCEE Project Manager / Project Supervisor shall consider all aspects of proposed work methods, materials and manpower to ensure that the

subcontractor is capable of performing the work in a safe manner and without risk to its own workers SCEE personnel or others on the project. Subcontractors will be provided with SCEE HSE Management Plan and Project Risk assessments and documentation applicable to the scope of works as outlined in SCEE-OP-OP-PRO-0010 Subcontractor Management Procedure.

Subcontractors shall:

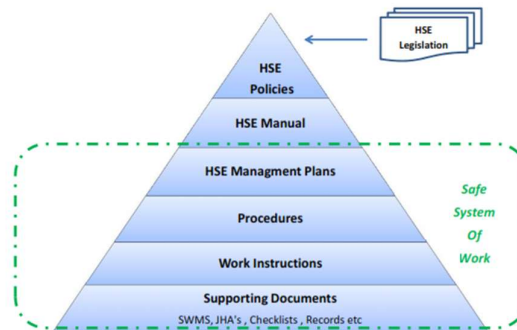
- Participate in the SCEE and Hansen Yuncken inductions prior to commencing work on the project
- Provide copies of current insurances i.e. workers compensation, public liability, motor vehicle registration and licences
- Liaise with the SCEE Project Manager / Supervisor on all aspects of their work to ensure smooth integration and prevention of conflict with SCEE work personnel and any subcontractors
- Participate in Prestart and Toolbox meetings and any general HSE training conducted while on the project as applicable
- Meet SCEE project safety KPIs with regard to hazard reporting and workplace inspections
- Provide safety data sheets (SDS) for all chemicals and hazardous materials it plans to use, discuss methods of storage, use training and safety precautions and obtain approval from the SCEE Project Manager / Project Supervisor before bringing the material onto the project
- Provide information on quantities of all hazardous materials on the project site for inclusion in the SCEE hazardous substance register
- Report all incidents to the SCEE Project Manager / Project Supervisor
- Cooperate with SCEE project team in all matters relating to safety and health and comply with all reasonable instructions from the SCEE Project Manager / Project Supervisor or their delegated representative
- Sign and abide by the SCEE sub-contractor agreement
- Provide Safe Work Method Statements and risk assessments 7 days prior to mobilisation for work activities for approval by SCEE Electrical prior to undertaking work activities.

SCEE subcontractors shall be required to complete SCEE site specific inductions and any Hansen Yuncken specified inductions prior to commencing work on the project.

Refer: [SCEE-BS-PRO-PRO-0004 Supplier and Subcontractor Selection and Review](#)  
[SCEE-OP-OP-PRO-0010 Subcontractor Management](#)  
[SCEE-BS-PO-TEM-0017 Subcontractor Questionnaire](#)  
[SCEE-OP-OP-LIS-0001 Subcontractor Management Checklist Structure and Responsibility](#)  
[SCEE-OP-OP-TEM-0056 Subcontractor Onboarding Presentation](#)  
[SCEE-BS-HS-TEM-0043 Safe Work Method Statement Document Review](#)

## 5.8 HSE Management System Structure

SCEE's HSE management system complies with the requirements of ISO 9001, ISO 14001 and ISO 45001. The HSE Management System is hierarchical, where documentation is developed to have a relationship and support the requirements of the levels above.



## 5.9 Document and Data Control

All SCEE HSE documentation and support material can be accessed on the SCEE Intranet.

All project documentation shall be established, recorded, controlled and maintained in accordance with SCEE Document and Data Control procedures. All documents are to be scanned and kept on the project job file on SharePoint.

The Project HSE Advisor is responsible for the management of HSE records and associated documents, and these documents shall be accessible for audit purposes.

Refer: [SCEE-BS-PC-PRO-0010 Project Document and Data Control](#)

## 5.10 Records and Records Management

The Project Manager and Project HSE Advisor are responsible for the management of records and documents associated with HSE requirements and activities of the project.

Safety records shall be stored and maintained in such a way that they are readily retrievable for audit purposes and protected against damage, deterioration or loss. Records to be retained include, but should not be limited to the following:

- Hansen Yuncken Communications
- Competency Records
- HSE Meeting Minutes
- Training Records
- Incident Reports and Investigations
- Workplace inspections
- Plant & Equipment inspections
- HSE Reports
- Permits / SWMS/ JHA's

- Risk Assessments
- Safety and Health Management Plans
- Audits

All HSE records are to be retained and archived in accordance with the SCEE quality management system requirements. As a minimum all records are to be scanned on to the project folder on SharePoint and maintained for the life of the project plus retention periods determined by record management procedures and / or in accordance with requirements determined by legislation.

Refer: [SCEE-BS-PC-PRO-0007 SCEE Project Data Numbering Procedure](#)  
[SCEE-BS-PC-LIS-0004 SCEE Project Documents Overview](#)

## 5.11 Responsibility and Accountability

### 5.11.1 HSE Responsibilities for All SCEE Workers

All SCEE workers (including subcontractors) shall assist in the prevention of events by:

- Being responsible for their own safety and health and that of others in the workplace
- Showing an understanding and demonstrating a commitment to preventing injuries, minimising damage and avoiding interruption to the organisation
- Keeping the workplace in a clean and tidy condition and not interfering with or misusing protective equipment (personal or mechanical) that has been provided or installed for the purpose of safety and health
- Using all personal and mechanical protective equipment issued or supplied as per the workplace requirements
- Providing renewed tickets/licenses to site management prior to them expiring
- Attending prestart meetings and participating in pre-start tasks
- Attending safety presentations and toolbox meetings
- Complying with the requirements for the protection of the environment
- Being responsible for their own environmental impact and that of others in the workplace
- Demonstrate environmental awareness
- Working in accordance with SCEE and requirements that have been produced to ensure the protection of the environment
- Immediately reporting all events, incidents or unsafe conditions that occur in the workplace
- Working in accordance with SCEE and Hansen Yuncken procedures and requirements that have been produced to ensure the safety and health of all workers and others
- Complying with the requirements of all statutory HSE legislation where applicable
- Participating in Fitness for Work testing as requested
- Adhering to permit requirements
- Assisting management in achieving the project HSE goals and objectives

- Immediately stopping any “Unsafe Behaviour” identified during daily work activities
- Understanding the Health, Safety and Environment Management Plan and Quality Plan as it relates to their position

### 5.11.2 Project Manager / Site Manager

Reports to the Operations Manager and/or General Manager Operations, in SCEE Head Office and is accountable for:

- The overall safety performance of all SCEE workers and subcontractors under their control.
- Ensure Datatrack is implemented and utilised on the project
- Ensuring that the necessary procedures are in place to carry out all aspects of the Project Safety Management Plan
- Ensuring that all requirements of this HSEMP, and HSE procedures are fully implemented and complied with
- Providing adequate resources for the implementation of the HSEMP
- Reporting all project progress in relation to safety to SCEE Head Office
- Motivating SCEE staff to pursue their individual responsibilities within the management plans
- Leading by example and conducting regular site inspections to assess SCEE’s compliance to the HSEMP requirements
- Supporting SCEE Management and Hansen Yuncken in the resolution of all health and safety issues
- Reviewing event and incident reports and minutes of safety meetings
- Reviewing environmental protection activities including waste disposal
- Reviewing HSE performance at regular intervals and following up any identified issues
- Reviewing the implementation of the HSE Management Plan
- Being visible on site to encourage, monitor and assess all aspects of safe working procedures
- Managing all sub-contractors engaged in their scope of works as SCEE workers
- Ensuring the provision of adequate health and safety resources, services and facilities to effectively implement and manage the health and safety program
- Reviewing Project HSE performance weekly (lag and lead indicators) with the HSE Team
- Participating in Project HSE systems audits as scheduled
- Attending and participating in weekly toolbox meetings
- Undertaking Project field inspections
- Encouraging proactive near-miss and hazard reporting by all site personnel
- Addressing any hazards and risks identified during daily work activities
- Ensuring relevant workers have undertaken the SCEE Supervisor Pathway Program
- Immediately stopping any “Unsafe Behaviour” identified during daily work activities

## 5.11.3 Site HSE Advisor

The Site HSE Advisor reports to the HSEQ Manager/Project Supervisor and has functional reporting requirements to the HSE Supervisor. Responsibilities and accountabilities include:

- Advising Project Management in HSE matters and ensuring the project complies with all health and safety requirements
- Utilise Datatrack for the recording of HSE information – Hazard/Inspections
- Assisting with the review and approval of the HSEMP
- Developing and delivering training programs to project personnel in risk management for potential hazards on the project site
- Initiating and developing safety training to assist with cultural change
- Making recommendations and contributing to improving SCEE's HSE system
- Preparing HSE performance reports for SCEE management and Hansen Yuncken Conducting and assisting with event and incident investigations
- Disseminating safety bulletins on workplace events and incidents
- Self-auditing of the Project Safety Management System
- All training undertaken on site shall be sent to the Training Department [training@scee.com.au](mailto:training@scee.com.au) to be uploaded in to MyPass.
- Conducting worker and supervisor inductions
- Assisting supervisors with conducting risk assessments
- Conducting daily site inspections and weekly documented site inspections
- Managing hazardous materials on site
- Management of workers compensation and rehabilitation on site, in conjunction with head office support
- Attending project safety, and Committee meetings, with the findings being reported to the necessary personnel
- Preparing and presenting safety presentations at weekly toolbox meetings
- Monitoring and reporting on safety initiative programs
- Reviewing the weekly HSE performance (lag and lead indicators) with the Project Manager
- Undertaking daily field inspections and documenting any hazards identified
- Conducting, preparing and assisting with risk assessments as required
- Establish and maintain HSE packs in the field
- Managing SCEE's project HSE requirements
- Assisting in the review and updating of Work Instructions, SWMS and JHA's as required
- Reviewing all permit systems prior to authorisation from Hansen Yuncken
- Inspecting First Aid facilities and replenish stock as required
- Immediately stopping any "Unsafe Behaviour" identified during daily work activities
- Conducting formal JHA reviews
- Implementing SCEE and Hansen Yuncken HSE Management Systems

## 5.11.4 Superintendent / Supervisor

Supervisors and Superintendents are to coordinate and direct all project works in their area of responsibility.

Supervisors report to the Superintendent and are responsible for:

- Assisting the Project Manager / Project Supervisor and the HSE Advisor in achieving the project HSE requirements
- Utilise Datatrack for the recording of HSE information – Hazards/Inspections
- Understanding the requirements of this HSEMP
- Planning to do all work safely via compliance to the applicable procedures.
- Promoting HSE awareness at every opportunity
- Identifying HSE training needs and informing management of these needs
- Ensuring personnel are suitably skilled to undertake their assigned work tasks
- Promoting and conducting hazard identification and reporting
- Assisting in the preparation of JHA's/SWMS's with workers
- Conducting HSE inspections and initiating rectification of any issues
- Participating in event and incident investigations
- All training undertaken on site shall be sent to the Training Department [training@scee.com.au](mailto:training@scee.com.au) to be uploaded in to MyPass.
- Facilitating pre start and toolbox meetings (which may be prepared by the HSE Advisor)
- Mentoring new starters or workers who have returned to site from leave
- Monitoring subcontractor health and safety performance
- Ensuring that adequate lighting is provided and maintained at all work places
- Ensuring there is clear demarcation of all access ways, walk ways, storage areas and roads
- Ensuring machine guarding is in place, adequate, and maintained
- Ensuring that all hard barricading is adequate, maintained and installed around penetrations as per site requirements
- Ensuring that all workers who work at height comply with relevant Work Instructions and procedures
- Participating in event and incident investigations
- Undertaking daily inspections of work areas under their control
- Promoting environmental awareness at every opportunity
- Identifying HSE training needs
- Establish and maintain HSE packs in the field
- Reviewing all JHA's /SWMS's in the field daily
- Ensuring all relevant permits are in place prior to commencement of work
- Ensuring a high standard of housekeeping is maintained at all times
- Removing or isolating any hazard identified during daily work activities
- Immediately stopping any "Unsafe Behaviour" identified during daily work activities
- Assisting and supporting the HSE Advisor with the resolution of safety issues when they arise

Supervisors will be engaged in ongoing observations of worker teams to facilitate the promotion of sound “safe behaviours” and to correct “at risk” behaviours.

## 5.11.5 Health and Safety Representatives

Project Health and Safety Representatives, where elected take an active and participative role in such things as workplace inspections, either as an individual or in collaboration with SCEE /or Hansen Yuncken HSE personnel. Elected Health and Safety Representatives will participate in applicable training courses sourced from a Registered Training Organisation in order to ensure they have the necessary skills to fulfil the position.

Where elected, the Health and Safety Representative is responsible for:

- Assisting the Project Manager / Project Supervisor and the HSE Advisors in achieving the project safety requirements
- Undertaking duties assigned under applicable legislation
- Consulting with Project Management on all safety matters
- Participating in safety meetings and programs
- Promoting a high level of safety awareness at all times by providing information to workers regarding project safety
- Reporting to management any safety matters that are of concern by workers
- Immediately stopping any “Unsafe Behaviour” identified during daily work activities
- Assisting and supporting the HSE Advisor with the resolution of safety issues when they arise
- Attending project HSE committee meetings

Health and Safety Representatives will be appointed as per applicable legislation.

## 5.11.6 Foreman / Leading Hand

Reports to the Supervisor or delegate and is responsible for:

- Assisting the Supervisor and the HSE Advisor in achieving the project HSE requirements
- Understanding the HSEMP and the essential principals of the project practices and procedures
- Applying their professional skills in a safe manner for the proper execution of the allocated task
- Exhibiting safety awareness for their personal safety and other workers.
- Maintain high standards of housekeeping
- Assisting in the resolution of safety matters in a responsive and pro-active manner
- Demonstrating care for the environment including flora, fauna and culturally significant sites
- Using and caring in a proper manner for power tools, mechanical aids, plant, equipment and personal protective equipment provided

- Receiving instruction, training and other assistance and help to carry out the work to both Hansen Yuncken and SCEE standards, adhere to policies, procedures and government legislation
- Immediately stop any “Unsafe Behaviour” identified during daily work activities

## 6 Personnel Management

### 6.1 Worker and Sub-Contractor Selection and Mobilisation

When selecting candidates for employment on the project, SCEE shall ensure personnel hold the appropriate current licenses or certificates necessary to perform their duties. All licences and training records shall be stored in Stems. SCEE shall also check verification of competency (VOC) validity and organise for further training or VOC’s where deemed necessary.

Where subcontractors are being mobilised to site the subcontractor shall first be approved through Felix to ensure they meet SCEE’s minimal requirements.

SCEE shall adhere to Hansen Yuncken procedures for site entry, including completion of necessary site entry and accommodation request forms, pre-employment medicals and drug and alcohol testing.

SCEE will submit to Hansen Yuncken representative’s details of prospective workers and sub-contractors for approval prior to mobilisation to site.

SCEE shall ensure any new site workers or subcontractors complete the following prior to commencing work on the project:

- SCEE Company Induction
- Firmus Data Centre Project Induction (Hansen Yuncken)
- Site Specific Induction
- Construction Safety Awareness Training (White Card)
- Medicals – Pre Employment, Drug and Alcohol
- SCEE standard VOC’s and any Project specific VOC’s applicable to the relevant qualification and role

All workers will be provided with a position description outlining their roles and responsibilities.

### 6.2 Pre-Employment Medicals

As a condition of employment, all site personnel are required to abide with Fitness for Work (FFW) procedures. This will commence with a pre-employment medical examination and a drug and alcohol screen prior to employment.

Prior to mobilisation, all site personnel will undergo a comprehensive Pre-employment Functional Assessment (PEFA), to assess their physical ability to perform the required tasks of their role. The PEFA assessments are customised for the physical demands of specific job

profiles and assess the musculoskeletal risks associated with the particular task requirements for individual job roles.

All pre-employment medicals, PEFA's, and drug and alcohol screening are coordinated by the SCEE Human Resources Department.

### 6.3 Induction, Training and Competency

SCEE shall ensure that all site personnel hold current and relevant qualifications for the work they are required to perform and that records are maintained and available at all times. Verification of all training, qualification, competency and Licences completed through the recruitment process, through the training team. SCEE shall organise any competency assessments as required.

Assessments and supporting documentation verifying the competencies of workers shall be in accordance with Australian Standards, legislation and Nationally Accredited Standards as required. Training providers for registered training packages will be appropriately qualified and sourced from a Registered Training Organisation (RTO).

All training undertaken on site shall be sent to the Training Department [training@scee.com.au](mailto:training@scee.com.au) to be uploaded in to MyPass for inclusion into the project training matrix.

Renewed workers licences/tickets shall be loaded into MyPass by individual workers who will all have the own individual MyPass Passport issued to them at mobilisation.

SCEE shall develop and maintain a Training Matrix through MyPass for all workers on site.

Refer: [SCEE-TR-TD-PRO-0001 Training Procedure](#)  
[SCEE-BS-HS-PRO-0008 Induction and Orientation Procedure](#)

### 6.4 SCEE Site Specific Induction

Prior to commencing work in the field all SCEE personnel shall attend a site specific induction. The SCEE HSE Advisor, or designated person, shall provide the induction and the induction shall be documented and recorded on the project training matrix.

SCEE Project Managers shall ensure that the SCEE induction compliments Hansen Yuncken induction and that it is revised as required, to include any new policies and procedures throughout the duration of the project. The induction shall include a review of Hansen Yuncken and SCEE HSE Management Plans as applicable to the SCEE scope of work.

As part of the induction process all workers shall be made aware of their responsibilities in accordance with this HSEMP and Hansen Yuncken Health and Safety Management Plan.

Project Management is responsible for ensuring that all personnel, regardless of previous experience, attend and participate in the SCEE Project Specific Induction.

All personnel completing the SCEE Project Specific Induction shall be required to complete the Medical Advice Form during the induction and review their New Starter Skills Checklist with their direct supervisor prior to commencing work in the field, as part of the SCEE First Swing Program.

Refer: [SCEE-BS-HS-PRO-0008 Induction and Orientation Procedure](#)  
[SCEE-HR-RE-TEM-0008 Medical and Allergy Disclosure Form](#)  
[SCEE-BS-HS-TEM-0068 Project Orientation Record](#)  
[SCEE-BS-HS-WIN-0036 Site Specific Induction Work Instruction](#)

### 6.5 Visitor Induction and Controls

Project Management shall ensure all visitors to SCEE receive a Visitors Induction, which shall consist of instruction on the specific safety requirements of the project. All visitors shall remain in the company of the person they intend to visit and be supervised at all times.

Refer: [SCEE-BS-HS-PRO-0008 Induction and Orientation Procedure](#)

### 6.6 Fitness for Work (FFW)

On site FFW will continue to be addressed by means of:

- SCEE Induction FFW education and awareness
- Blanket BAC daily testing of all personnel
- Drug and alcohol screening on a random basis or where there is just cause
- Fatigue management and education
- Hydration management and education
- Nutrition and lifestyle management and education
- Stress management and education
- Worker Assistance Programs (EAP)

SCEE will incorporate ongoing Drug and Alcohol testing throughout the duration of the project to support the FFW Site requirements.

SCEE Management and HSE Advisors will focus on these issues throughout the duration of the project via prestart meetings, safety newsletters, toolbox meetings, posters, notices and information sessions in conjunction with Hansen Yuncken.

All breaches of Fitness for Work are to be actioned with reference to the SCEE Fitness for Work Procedure and reported to the SCEE HR Manager for action.

SCEE shall conduct a “for cause test” for alcohol and/or drugs following an incident which has occurred either in the workplace or at the accommodation villages. SCEE will endeavour at times to undertake this testing however may authorise an external party to assist as required.

Where testing is not achievable by either SCEE or an external party, site is to contact the HR Manager for further assistance.

SCEE will work with Hansen Yuncken’s procedures with regards to Pre-employment Medicals, Fitness for Work and Fatigue Management.

Refer: [SCEE-HR-HR-PRO-0009 Fitness for Work Procedure](#)  
[SCEE-BS-HS-PRO-0025 Fatigue Management](#)  
[SCEE-BS-HS-GUI-0001 Event Notification Guide](#)

## 6.7 HSE Discipline

SCEE Project Management shall ensure all personnel are aware that any breach of the SCEE Code of Conduct or repeat or deliberate non-compliance with SCEE or Hansen Yuncken HSE systems or requirements may result in disciplinary action. In the event that disciplinary action is required then SCEE performance management and disciplinary procedures will be implemented with reference to Hansen Yuncken HSE Procedures.

The Human Resources department shall be contacted for all disciplinary proceedings and will coordinate the process.

Personnel will also be advised that there may be times where a single incident may involve multiple levels of disciplinary action or removal from site. Some instances may include but not be limited to breaches in isolation and tagging procedures, alcohol and drug abuse at the work site, tampering with or damaging safety equipment.

Refer: [SCEE-HR-HR-POL-0003 Code of Conduct Policy](#)  
[SCEE-HS-HS-PRO-0003 Code of Conduct](#)  
[SCEE-BS-HS-PRO-0003 Fair and Just Culture Procedure](#)

## 6.8 Verification of Competency and Re-Training Frequency

SCEE undertakes Verification of Competency (VOC) testing of all operators of plant including EWP’s, Forklifts, Telehandlers, Cranes, Backhoes and Excavators and identified high risk work activities.

VOC’s and retraining/refreshers are undertaken in selected courses according to the following guidelines:

Competency	Frequency (Years)
Blue / White Card	One off
VOC’s (EWP, Forklift/Telehandler, Crane, Backhoe, Excavator)	2
Scissor Lifts (under 11m)	Yellow Card
CPR/LVR (Electrician)	1
Provide First Aid	3
Confined Space	2
Safe Working At Heights	2
Portable Fire	2

## 7 Consultation and Communication

SCEE Project Management will schedule regular structured meetings to ensure effective communication, consultation and participation by all levels of the workforce.

Refer: [SCEE-BS-HS-PRO-0028 Consultation and Communication Procedure](#)

### 7.1 Pre-Start Meetings

SCEE Supervisors shall conduct a prestart meeting with all workers (including subcontractors) under their control prior to the commencement of work or when personnel are transferred to a new location or task. The prestart should address as a minimum:

- Daily FFW / BAC Testing
- The day's activities
- Any notices, bulletins, hazards, event or incident findings
- HSE matters from adjacent work groups or contractors
- HSE matters relevant to the task
- JHA/SWMS and WI's relevant to the task
- Any permit requirements relevant to the task
- Any changes in the status of the work environment
- All safety precautions to be taken

If personnel are sick and staying in camp accommodation and have not contacted site management regarding their absence they shall be telephoned using the contact details supplied at induction. If contact cannot be made at least two company representatives shall together visit the person's room to check their wellbeing and ask if any assistance can be provided (e.g. site medic or doctor's appointment required).

At no time shall a person who lives in camp accommodation and who does not turn up for work or make contact with their designated contact advising of their absence from work, remain unvisited throughout the working day.

Late comers shall sign on a separate sign-on sheet in the SCEE site office. Their immediate supervisor will be informed of their arrival and make arrangements to transport them to the work front and receive the prestart information.

Refer: [SCEE-BS-HS-TEM-0024 Pre Start Safety Talk Checklist](#)  
[SCEE-BS-HS-TEM-0056 HSE Sign on Sheet](#)  
[SCEE-BS-HS-WIN-0005 Prestart Meetings Work Instruction](#)

### 7.2 Toolbox Meetings

Toolbox meetings are the forum for workers to raise and discuss HSE topics. These meetings will be conducted weekly to present safety training talks and/or videos as organised by the Project HSE Advisor, Safety Committee, HSE Department or Hansen Yuncken as required.

Toolbox agenda items may contain:

- Safety concerns raised, during the shift or week
- Discussion of any unresolved safety issues
- Discussion on safety aspects of planned work
- Discussion of any changes to safety procedures
- A specific HSE topic
- Review of events or incidents during the week & the corrective action taken or planned
- Discussion on results of audits and inspections
- Risk Register contents
- HSE initiatives and performance

Minutes of meetings are to be recorded on the Toolbox Meeting Report Form by the SCEE Site Manager/Supervisor and distributed for action as required.

Copies of the minutes will be posted on notice boards and filed for record. All Toolbox Meeting Minutes are to be submitted to the HSEQ Manager within 24 hours of occurrence, complete with attendance sign on sheets.

Refer: [SCEE-BS-HS-WIN-0011 Safety Toolbox Meetings](#)  
[SCEE-BS-HS-TEM-0025 Toolbox Meeting Report Form](#)

### 7.3 HSE Promotion

Project Management shall decide upon and implement HSE promotional activities including:

- HSE Awareness Campaigns
- HSE Posters and Talks
- Reward and Recognition Programs

Project Management shall be proactive in all site safety promotional schemes

### 7.4 Project Safety Committee

A project Safety Committee Meeting will be held monthly as a minimum, dependent on the type of work, number of workers and changing shift patterns.

The Committee will operate in accordance with the requirements of the relevant legislation and either the SCEE Site Manager or HSE Manager will chair the Committee. The Committee shall be comprised of:

- SCEE Site Manager
- SCEE HSE Advisor
- Hansen Yuncken representatives (upon request)
- Elected Health and Safety Representatives
- Nominated worker representatives from work areas/groups

At least half of the committee will be worker representatives. Subcontractor representatives may also be requested to attend the Safety Committee Meetings. Supervisors may be required to attend meetings when matters relating to their work areas are to be discussed.

The purpose of the Safety Committee meetings is to discuss safety, health and environmental issues relevant to the project and have a priority on raising HSE Awareness on site. The Safety Committee Meeting minutes will be recorded and made available to all personnel on project noticeboards.

Due to the size of the workforce on some projects forming a SCEE project health and safety committee may not be practicable, in such cases a health and safety committee may be run jointly with other contractors or SCEE may use other processes such as toolbox meetings to convey HSE information.

Refer: [SCEE-BS-HS-WIN-0013 Project Safety Committee Meetings](#)

## 7.5 Management Meetings

Safety must be included in all management meetings and shall be the first item on the agenda to ensure it is given the necessary attention.

Safety topics for management meeting could include:

- Project statistics to date
- Review of incidents indicating any trends
- Identification of training needs or any changes to the Safety and Health Management System
- Review of any ongoing alternative duties
- Planning of work skills and safety training program

## 7.6 HSE Notice Boards

Dedicated HSE notice boards will be implemented in prominent locations on site, accessible by all personnel, such as crib rooms and include information on:

- Minutes of Meetings
- HSE Promotional Material
- Emergency Response procedures, contacts and phone numbers
- First Aid personnel and contact details
- Fire Warden personnel and contact details
- Relevant and current HSE alerts and bulletins

Notice boards should be kept neat, tidy and up-to-date to ensure efficient communication of HSE issues and information.

## 7.7 Safety Incentives

SCEE shall implement a HSE reward and recognition program that focuses on the following principles, and all personnel will be encouraged to:

- Promote a proactive approach to health, safety, and environmental management.

- Encourage employee engagement and participation in HSE initiatives.
- Recognize and reward individuals and teams for outstanding performance in HSE.
- Continuously improve HSE practices and standards within the project.

The program will acknowledge achievements by individuals or groups. SCEE will also recognise and reward individual achievers and provide them the opportunity to share their experience with the rest of the workforce.

### **Eligibility**

All workers and teams participating on the project are eligible to participate in the HSE Rewards and Recognition Program. Eligibility criteria include but are not limited to:

- Compliance with HSE policies, procedures, and regulations.
- Contribution to the development and implementation of HSE initiatives.
- Demonstration of leadership and commitment to promoting a culture of safety and environmental sustainability.

Recipients of HSE awards will be eligible for a variety of rewards and incentives, that could include:

- Monetary bonuses or gift cards.
- Written Commendations.
- Public recognition through company-wide communications and social media channels.

### **Selection Process**

Nominations for HSE awards will be solicited from the workforce and reviewed by the SCEE Management team. Nominations will be evaluated based on predetermined criteria and select recipients for each award category.

**Refer:** [SCEE-BS-HS-PRO-0007 Safety Reward and Recognition Program](#)

## **7.8 HSE Alerts and Information**

The SCEE Safety Awareness Communication System (SACS) is the primary method by which information affecting worker safety is disseminated to all SCEE workers and work locations.

SACS is a three tier notification system. HSE Alerts and Bulletins are used to communicate and raise awareness regarding any significant HSE issues which may pose a risk to personnel, plant and equipment, environment or the company. These issues may be identified as a result of incident investigations, hazard analysis, inspections, audits or management system reviews.

HSE Newsletters are used to communicate positive HSE events throughout SCEE and to keep personnel informed of other activities of the business relevant from a HSE perspective

All SACS documents will be distributed electronically to all personnel and be posted on site HSE notice boards.

**Refer:** [SCEE-BS-HS-WIN-0010 Safety Awareness Communication System \(SACS\)](#)

## 7.9 Health and Safety Issue Resolution

When an issue relating to workplace health and safety arises, management and workers must in the first instance attempt to resolve the matter by consultation between themselves. Where personnel believe that an unsafe or hazardous situation exists, or that planned work constitutes unsafe work practices, the worker has a right and obligation to:

- Stop work and remove themselves from the perceived hazard or situation.
- Immediately advise other workers who are in the affected area or directly involved in the work where the hazard or danger exists.
- Immediately notify their Supervisor of the unsafe or hazardous situation.

Most safety and health issues will be resolved between the supervisor and the worker however, where a satisfactory outcome cannot be reached the HSE issue resolution process will be initiated in accordance with the SCEE Health and Safety Issue Resolution procedures.

All managers, supervisors and workers shall be made aware of the SCEE consultation and issue resolution procedures and how they shall be applied. SCEE Site Management will also comply Hansen Yuncken requirements for Reporting and Resolving Health and Safety Issues.

Refer: [SCEE-BS-HS-WIN-0012 Health and Safety Issue Resolution](#)  
[SCEE HSEQ Specific Induction \(Risk Management & Issue Resolution\)](#)

## 7.10 Signage

The Project Manager and HSE Advisors have the responsibility to determine the relevant HSE signage to be displayed at appropriate visible points across work sites and locations. Signage may be permanent or temporary and shall comply with all site requirements and AS 1319. Signs shall be posted to assist in the prevention of events and help identify hazards. Signs shall also be posted to indicate the location of safety equipment and devices such as fire extinguishers and first aid kits.

Signs shall be placed so that they can be readily seen and should be maintained in a clean and readable condition.

## 7.11 HSE Handover Report

A hand over report of the current shifts activities, resolved HSE issues as well as any outstanding issues shall be provided to the oncoming Supervisor and HSE Advisor for all planned R&R and leave cycles.

Shift handover reports shall be as a minimum detailed in a daily diary.

## 8 Hazard and Risk Management

### 8.1 General

It is a requirement that all SCEE operational sites and office locations implement HSE hazard and risk management processes across their scope of operations, and those processes are applied to all activities that SCEE can control or influence.

HSE hazards and risks must be assessed, prioritised and managed as appropriate to the nature, scale and potential impacts of operations and activities both individually and as a whole.

The hazard and risk management process shall be applied to all aspects of the Project including pre-mobilisation planning, mobilisation, project execution and project close out/review.

Refer: [SCEE-BS-RM-PRO-0002 Operational Risk](#)  
[SCEE-BS-FM-TEM-0002 Risk Matrix](#)

### 8.2 Hazard Identification

SCEE Project Management and Supervisors shall ensure hazard identification, reporting and control is implemented across all aspects of the Project. All personnel are required to participate in hazard reporting as per site and Hansen Yuncken requirements, with the understanding that under legislation worker's (including subcontractors) are required to report any situation in the workplace which they believe could constitute a hazard to any person.

Refer: [SCEE-BS-RM-PRO-0002 Operational Risk](#)

#### 8.2.1 Hazards controlled in the Design Stage

##### Design and Construct Projects:

SCEE shall engage suitably qualified architects and/ or engineers as part of the design development phase who will provide a safety in design report, inclusive of risk assessment identifying any associated residual buildability hazards.

Where applicable, all identified buildability hazards shall be communicated to relevant personnel and included within the project CRAW.

##### Construct Only Projects:

Where SCEE is engaged to perform 'Construct Only' projects a copy of the projects safety in design report, inclusive of risk assessment identifying any associated residual buildability hazards shall be requested from Hansen Yuncken.

Where this is not provided by the designer, SCEE shall engage a suitably qualified Engineer to conduct a risk assessment on any buildability issues. Where applicable, all identified buildability hazards shall be communicated to relevant personnel and included within the

project CRAW. Prior to any design changes during the construction phase a review of all potential hazards shall be conducted.

Where identified to have the potential to introduce additional or impact existing known hazards, the Site Supervisor/ Manager shall arrange for a review of the Project CRAW in consultation with the Project Manager, HSEQ Advisor and any other relevant workers in order to assess all additional hazards and identify effective control measures.

Design changes during construction shall be discussed through the Construction Progress Meetings and documented within the meeting minutes recorded.

Where a review of the CRAW is conducted all updates inclusive of changes in hazards or controls shall be communicated to impacted workers via formal means including but not limited to, toolbox meetings, email correspondence, or contractor meetings.

### 8.3 Hazard Observation Reports (HazOb)

The SCEE Hazard Observation (HazOb) report books are made available to all personnel on site at all times, or Hansen Yuncken HazOb cards may be used, where required. All hazards are to be reported and entered into Datatrack even those that were rectified immediately by the person who identified it. This reporting process allows the information to be used to identify trends and assist other work groups or project sites to improve safety on the job.

SCEE shall undertake a weekly hazard hunt with the purpose of encouraging workers to speak up about safety hazards on site with a responsive reporting system so it leads to an improved safety performance and at the same time having a positive impact on processes and productivity on our sites.

Hazards reported will be recorded in the hazard observation register for the project and all corrective actions allocated logged in STEMS. All reported hazards shall be followed up, closed out and feedback provided to the work group in a timely manner.

Refer: [SCEE-BS-HS-TEM-0012 Hazard Observation \(HAZOB\)](#)  
[SCEE-BS-QU-PRO-0007 Non-Conformance \(Including Corrective and Preventative Actions\)](#)

### 8.4 Hazard and Risk Assessment

All hazards and risks shall be assessed by applying the SCEE Risk Matrix. Risks are assessed using a combination of Likelihood and Consequence.

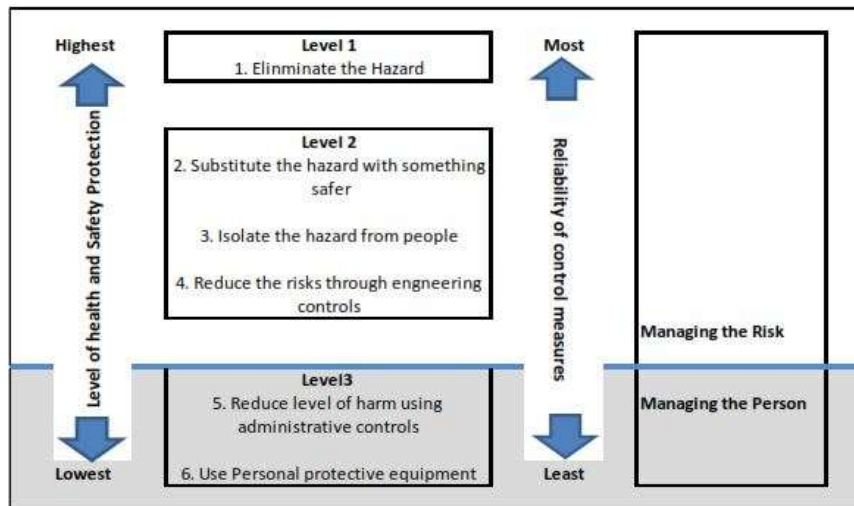
When assessing risk controls, consideration shall be given to both preventive controls (to prevent an incident/ event occurring) and mitigation controls (to minimise the consequences should the incident/ event occur).

A residual risk rating of 20-25 on the risk matrix shall be intolerable, while a rating of 1-19 shall be tolerable provided that it has been determined that the risk is as low as reasonably practicable (ALARP) and appropriate control measures are in place

Refer: [SCEE-BS-RM-TEM-0002 Risk Matrix](#)

## 8.5 Risk Control

For every Hazard identified at least one control measure must be implemented. All controls shall be developed in accordance with the Hierarchy of Controls, relevant legislation, Codes of Practice and Australian Standards, to a control risk to a level which is both tolerable and As Low as Reasonably Practicable (ALARP):



- **Elimination** - controls involve eliminating either the substance or the activity which gives rise to the risk and is the most effective form of risk reduction
- **Substitution** - controls involve substituting high risk products or activities with alternative lower risk products or activities to reduce overall risk exposures
- **Isolation** - controls involve isolating a hazard and may be achieved by distance, the use of effective barriers or a combination of both
- **Engineering** - controls involve making engineering changes to a process or piece of equipment used to perform a task
- **Administration** - controls consist of properly designed and implemented work practices and procedures
- **Personal Protective Equipment (PPE)** - is considered the last line of defence against hazardous substances or conditions.

## 8.6 Work Instructions

SCEE has developed Work Instructions defining the required controls for tasks which are performed on a regular basis and work activities that SCEE has identified as being high risk. The Work Instructions specify the method of work to be followed when conducting the task.

Work instruction information is communicated to each worker through toolbox sessions and made available to all personnel when performing identified activities.

Refer: [SCEE-BS-RM-PRO-0002 Operational Risk Management](#)

## 8.7 Safe Work Method Statements (SWMS)

Safe Work Method Statements (SWMS) shall be developed for all identified high risk construction work as outlined in legislation. All SWMS shall be reviewed by the on-site HSE Advisor or the responsible Supervisor using SCEE-BS-HS-TEM-0043 Safe Work Method Statements Document Review. This Review must be then captured in the job file (SharePoint).

For tasks which have risk assessed as high, the Project/Site Manager and Supervisor are required to review and sign off on the SWMS prior to work commencing. This process is designed to assess controls and ensure the hazards identified are effectively controlled in the best manner possible.

SWMS must be reviewed by the workers involved and specifically apply to the high risk activity and the actual work environment.

Any tasks with an identified extreme residual risk are not to proceed and require referral to the Project Manager and HSEQ Manager for assessment. Divisional General Manager (or higher) approval is required for the activity to commence.

SWMS must be developed where construction work involves one or more of the following High Risk Construction Work categories as defined in the WHS regulations;

- Involves a risk of a person falling more than 2m; or
- Is carried out on a telecommunication tower; or
- Involves demolition of an element of a structure that is load-bearing or otherwise related to the physical Integrity of the structure; or
- Involves, or is likely to involve, the disturbance of asbestos; or
- Involves structural alterations or repairs that require temporary support to prevent collapse; or
- Is carried out in or near a confined space; or
- Is carried out in or near—
- a shaft or trench with an excavated depth greater than 1.5m; or
- a tunnel; or
- Involves the use of explosives; or
- Is carried out on or near pressurised gas distribution mains or piping; or
- Is carried out on or near chemical, fuel or refrigerant lines; or
- Is carried out on or near energised electrical installations or services; or
- Is carried out in an area that may have a contaminated or flammable atmosphere; or
- Involves tilt-up or precast concrete; or
- Is carried out on, in or adjacent to a road, railway, shipping lane or other traffic corridor that is in use by traffic other than pedestrians; or
- Is carried out in an area at a workplace in which there is any movement of powered mobile plant; or
- Is carried out in an area in which there are artificial extremes of temperature; or
- Is carried out in or near water or other liquid that involves a risk of drowning; or
- Involves diving work.

All relevant workers shall endorse the SWMS prior to commencing the task.

The SWMS Review Checklist is to be completed for each SWMS reviewed by HY.

No works shall commence without full review and of the relevant SCEE SWMS by HY.

High Risk Construction Work (HRW) check ins are a tool used for learning about high-risk work being performed in accordance the relevant HY Standards. They review the work being done, learning which controls are in place and how effective they are, what is working well about the task, what challenges are, and what each party can do to improve how the work is being done.

HRW check ins are recorded in HammerTech and performed periodically throughout the duration of the project by HY.

Refer: [SCEE-BS-HS-PRO-0002 SWMS Development](#)  
[SCEE-BS-FM-TEM-0002 Risk Matrix](#)  
[SCEE-BS-HS-TEM-0043 Safe Work Method Statement Document Review](#)

## 8.8 Take 5

Completion of a Take 5 Risk Assessment (Take 5) is required for all tasks. It allows hazards and level of risk to be assessed prior to work commencing and also serves as a final check to ensure controls from other processes such as JHA's and formal risk assessments have been implemented.

The Take 5 is a personal real time risk assessment tool designed to assess a person's individual exposure to risk when performing tasks, and as such should be seen as necessary in the following situations:

- When commencing any new task
- When changes to the workplace occur, such as inclement weather or task modifications
- When commencing involvement in tasks controlled by JHA or SWMS
- When changing the method of work (e.g. removing PPE)

Refer: [SCEE-BS-HS-WIN-0002 Take 5 Risk Assessment](#)  
[SCEE-BS-HS-TEM-0011 Take 5 Form](#)

## 8.9 Job Hazard Analysis (JHA)

A JHA must be developed by work crews for all activities and tasks that have an identified risk rating of medium or above that are not being conducted under a SWMS. Tasks are to be analysed in accordance with the following criteria:

- What are the steps making up the job or task? (Steps)
- What are the hazards that could impact on each step of the job? (Risks)
- What action is to be taken to remove or reduce the hazard? (Controls)

The Supervisor is responsible for identifying tasks for analysis and for conducting the JHA process on a daily basis with the work crew. The JHA may complement an existing Work Instruction and in such a case the relevant WI will be attached to the JHA present at the work front. The JHA will be developed on the SCEE JHA template or Hansen Yuncken equivalent form where required.

SCEE Project Management shall ensure:

- JHA's are developed with the participation of all workers involved in the task
- A JHA will be initiated prior to commencing tasks
- All workers understand the requirements and have signed on to the JHA
- JHA's are reviewed and signed off by Supervision daily
- The information from common task JHA's (e.g. cable pulling, terminating) become SCEE WI's for that task
- A register is maintained for all JHA's
- Records of all JHA's shall be archived when the job has closed
- Where WI's exists, they are appropriately communicated to worker's

All JHA's shall remain valid for 7 days and be reviewed daily. The JHA will be amended to include any identified change in the work method or any new hazards due to changing work environment. All identified changes will be communicated to the work crew and the amended JHA signed off by the Supervisor.

Refer: [SCEE-BS-HS-PRO-0001 Job Hazard Analysis](#)  
[SCEE-BS-HS-TEM-0008 JHA Form](#)

## 9 Control of Hazards / Risks

### 9.1 5 Star Commitment

SCEE has identified a series of significant fatal risks to its workers and subcontractors. These risks are:

- Electrical Isolations
- Management of Change
- Lifting Operations
- Working at Heights
- Driving Safety



The 5 Star Commitments do not cover all operational risk nor do they replace SCEE's Risk Management Processes that shall be used by both workers and subcontractors. They set a minimum standard for establishing a safe work environment, set clear expectations for safe behaviour, assist in creating a safety mindset and provide a checklist for ensuring safe behaviour of one's self or others, regardless of where the activity is taking place in SCEE's operations.

Any breaches of the 5 Star Commitments will be referred to the Human Resources Department for disciplinary action which may result in termination of the workers employment.

Refer: [SCEE-BS-HS-PRO-0027 5 Star Commitment Procedure](#)

## 9.2 Stop Work Authority

SCEE is committed to providing a safe work environment for all workers and contractors working on site. As such, it is a duty and the right of every worker and contractor at SCEE to exercise the Stop Work Authority whenever the worker feels at risk in completing a job/task. Management supports the decision of its workers in the diligent execution of the Stop Work Authority.

The following steps shall be followed when the Stop Work Authority has been initiated:

- A worker may cease or refuse to carry out work if the worker has a reasonable concern that his/her health, safety or wellbeing is at risk from an immediate or imminent exposure of a hazard.
- The worker instigating the Stop Work shall inform his/her Supervisor, HSE Advisor or safety representative (if appointed) immediately when work has stopped.
- The HSE Advisor or safety representative may direct a worker to cease work if the representative has reasonable concern that the job/task would expose the worker to a serious health and safety risk from exposure of a hazard. The Safety Representative or HSE Advisor shall inform his/her Supervisor immediately when work has stopped.
- It is the responsibility of the Supervisor to ensure that the hazard is isolated, and the Stop Work Authority is maintained until control measures have been implemented to reduce the risk to an acceptable level.
- If the hazardous situation cannot be rectified immediately the worker must be allocated alternative work in the same or another workplace if that work is safe and appropriate for the worker depending on the worker's competency level.
- A worker's employment and entitlements shall not be affected by invoking the Stop Work Authority if the worker has not unreasonably failed to comply with a direction to carry out suitable alternative work at the same or other workplace that was safe and appropriate for the worker.
- Hansen Yuncken will be informed where a stop work authority has been initiated.

## 9.3 Family Star

At SCEE Electrical, leadership is considered crucial for improving performance and promoting health, safety, environment, and quality within the organisation. Effective HSEQ leadership serves as a key factor in reducing serious health and safety incidents as well as high potential events. To foster a strong team culture, it is essential for personnel to demonstrate HSE culture behaviours, exhibit curiosity, challenge norms, and genuinely care for others. This helps create a mature team environment that attracts individuals who want to be part of it.

By integrating these elements into the overall approach, SCEE Electrical aims to foster a strong safety culture, empower workers to be proactive in risk management, and continuously improve performance in all areas of the business. The focus on leadership, family-like care, drift awareness, work culture, critical control points, and cross checking contributes to creating a safe and thriving work environment where individuals are motivated to be their best and look out for one another.

The Family Star Initiative foundations are based on one question - Who has the least to say in how we go about our work each day and has the most to lose?

The Family Star Initiative is based around the following areas;

- Family Values
- Drift
- Group Space/Head Space/Work Space
- Critical Control Points
- Cross Checking

This initiative will be presented by Site Management as a face to face session with all workers and supported throughout the duration of the project. The sessions will be recorded in Stems and form part of the Project Training Matrix.

Refer: [SCEE-BS-HS-PRO-0027 5 Star Commitment Procedure](#)

## 9.4 Mobile Phones

With the introduction of many approved applications (e.g., SharePoint, Datatrack, Critical Risk Management, Leadership in the field, Stems) the safe use of devices across sites is essential.

SCEE Electrical with the approval of Hansen Yuncken will allow for a device to be used to access approved online systems while providing specific work area guidance to prevent personnel using devices in a way that may lead to an incident or distraction.

Mobile communication devices permitted in operational areas with specific guidance regarding use e.g.

- For work related activities on approved SCEE/Hansen Yuncken applications.
- To take photos or capture video footage that will be used specifically for work purposes only. Once used the images shall be deleted.
- Earphones/pieces shall not be used at any time when undertaking work related activities.
- Storage location in Heavy Mobile Equipment (HME) is to be in a secure location / crib bag - outside of view. Storage in an operator's pocket is not acceptable due to the risk of driver distraction.
- No phones when driving - Do not operate cell phones (whether handheld or hands free) while operating a vehicle. Pull over to a safe location and stop the vehicle. Once stopped answer or make the required phone call.
- No phones when completing any High-Risk Works. If you need to use your phone, come back to ground level and go to a safe location before answering or making a call.

To ensure no one is exposed to a hazard while using a mobile communication device, all personnel must always ensure they:

Are stationary whilst using a device, i.e.

- Not walking around (unless within office / admin areas where walking while talking is permitted provided that is done free of hazards)
- Not climbing up or down stairs
- Not conducting physical work
  - a) Are in a safe environment or location; positioned clear of any hazards
  - b) Are aware of their surroundings; and
  - c) Comply with directions issued by their leaders.

### 9.5 Work Environment and Housekeeping

Project Management shall ensure all SCEE working areas are maintained to a high standard. The following housekeeping requirements shall be complied with:

- Work areas shall be kept neat and tidy
- Storage facilities must be provided in all areas, sufficient to cope with requirements
- Nothing shall obstruct safety, first aid, and fire or ventilation equipment
- Platforms, stairways and ladders shall be kept clear, tidy and in good repair
- Amenities shall be kept clean and hygienic
- Oils and grease on floors shall be cleaned up immediately to prevent slip hazards
- All unnecessary items must be removed from the workplace daily
- Waste disposal containers must be provided and regularly emptied

Housekeeping will be monitored in formal site inspections and informal inspections of the workplace shall be conducted regularly by Project Management to ensure high standards of housekeeping are maintained. Any identified hazards shall be rectified immediately.

### 9.6 Personal Protective Equipment (PPE)

All personnel are required to comply with the wearing and use of all issued PPE. Project Management shall ensure all PPE and clothing requirements set by Hansen Yuncken, legislation and applicable Standards are complied with.

The following is the minimum protective clothing requirements on site:

- Long trousers with reflective stripes
- Long sleeve shirts Hi-Vis with reflective stripes
- Leather steel cap lace-up protective footwear
- Safety glasses
- Gloves applicable to the task, including Hi-Vis gloves as required (to be carried and available at all times)
- Hard hat

The required PPE for all tasks must be identified in the risk assessment (JHA /Take 5 / SWMS). Project Management shall ensure appropriate PPE is available for tasks requiring further protection e.g. hearing protection, respirators, face shields etc.

Project Management shall ensure that workers are appropriately trained in the use, maintenance, storage, disposal and limitations of the equipment prior to use.

All issued PPE will comply with the following Standards:

PPE	Standard
Safety Helmet	AS/NZ 1801
Eye / Face Protection	AS/NZ 1336 AS/NZ 1337 AS/NZ 1338
Hand Protection	AS/NZ 2161 AS/NZ IEC 60903
Footwear	AS/NZ 2210
Respiratory protection	AS/NZ 1715 AS/NZ 1716
Hearing Protection	AS/NZ 1269 AS/NZ 1270
Clothing	AS/NZ 4501
Fall Protection	AS/NZ 1891
Skin (Sun) Protection	AS/NZ 2604

Refer: [SCEE-BS-HS-PRO-0013 Personal Protective Equipment Procedure](#)  
[SCEE-BS-HS-GUI-0004 SCEE Minimum PPE Matrix](#)  
[SCEE-BS-HS-GUI-0005 SCEE Glove Matrix](#)

## 9.7 Working in Heat

Where location or conditions have been identified as having the potential to cause heat stress conditions then supervisors where practicable, shall consider and apply the following controls when organising work:

- Schedule demanding activities for the cooler times of the day
- Ensure sufficient drinking water is available at work locations
- Ensure sunscreen is available at work location
- Job rotation for personnel to provide relief periods
- Shaded rest areas to rehydrate
- Provision of additional PPE, such as hat brims, neck wraps, over hat protectors etc.

At induction and throughout the duration of the project, personnel shall be advised and educated on such things as:

- Acclimatisation
- Identifying the symptoms of heat stress
- Importance of fluid intake / hydration
- Impact of Health and Lifestyle factors
- Control strategies and work routines
- Prevention of heat related illness

## 9.8 Permits to Work

SCEE shall follow Hansen Yuncken's Permit to Work System. All work that will require the use of permits shall be submitted to Hansen Yuncken 24 hours prior to the works commencing.

Where required the following permits shall be raised:

- Hot Works
- Confined Space
- Ground Works
- Demolition
- Roof Access
- Isolation
- Energisation
- Working in Energised Areas
- Coring and Cutting
- Plant Setup
- Strip Scaffold

A work permit checklist is to be generated and request by SCEE in HammerTech for each work permit which is to be submitted to HY for approval.

An expiry date shall be set for each work permit. The HY Project Team shall monitor the relevant activity to ensure permits are current. Extensions to the expiry date shall be approved by HY. When completed the works permit checklist shall be closed in HammerTech.

## 9.9 Working at Heights

SCEE is committed to eliminating all fall potential from project works. For each job where workers are required to work at height and there is a risk of falling from one level to another a risk assessment shall be conducted to identify the level of risk and controls to be implemented.

SCEE Project Management and supervisors are responsible to:

- Develop and maintain a system to ensure that work shall not be undertaken at any height without there being adequate fall prevention or fall protection measures in place
- Ensuring only those workers with current working at height qualifications are allowed to work at heights
- That risk assessments (JHA/SWMS) are conducted to identify hazards and the appropriate control measures are implemented

Some common controls that should be considered are:

- Temporary Work Platforms – EWP's, Scissor Lift, Scaffolding
- Edge Protection – guard rails
- Individual Fall Arrest Systems - Safety harness with lanyard
- Restraint Systems - Static lines

SCEE will work in compliance with Hansen Yunckens Working at Heights Procedures and Permits.

Refer: [SCEE-BS-HS-PRO-0017 Working at Heights \(High Risk\)](#)  
[SCEE-BS-HS-TEM-0072 Working at Height Rescue Plan](#)  
[SCEE-BS-HS-TEM-0036 Working at Height Permit](#)

## 9.9.1 Falling Object Prevention and Encapsulation

A Job Hazard Analysis (JHA) shall be completed prior to commencement of all work above ground level.

The risk of falling objects shall be controlled through Elimination wherever possible. Where this is not possible, controls from at least one of the following principles shall be applied for all work above ground level. Where work is conducted within 2 metres of an edge or void, controls from a minimum of two of these principles shall be applied, to ensure a secondary level of defence:

- Secure – all tools, equipment and material during use, transport and storage
- Encapsulate – barriers around work areas to prevent uncontrolled items falling from one level to another
- Exclude – prevent people from accessing below the work, in case the above controls fail.

Effectiveness of controls shall be monitored through the use of SCEE's 5 Star Inspection Form – Prevention Dropped Objects. This inspection shall be completed prior to any working at heights commencing.

Stored items such as conduit, boards, and other lengthy items shall be stored horizontally and not leant against structure, handrails etc.

## 9.10 Working from Ladders

The use of platform ladders is permitted provided:

- The ladder is appropriate to the task
- The ladder is in good condition (no broken rungs, rails or footings etc.)
- The ladder is on firm, stable and level ground (this includes grid mesh if the ladder footings are larger than the grid mesh squares)
- The ladder is the correct height for the task to avoid reaching or stretching
- The body must be centred between the rails at all times
- The ladder is secured against displacement (i.e. slipping or sliding) and/or there is another person holding the base of the ladder
- All the locking devices on the ladder are secure
- The ladder is always faced while climbing up or down and while positioned on the platform

Materials or tools are not carried by hand while climbing the ladder. Tools should be carried in a side pouch or handed up by an assistant.

The work undertaken while on the ladder should allow for three points of contact to be maintained and tools can be operated safely with one hand.

Refer: [SCEE-BS-HS-WIN-0020 Portable Ladders](#)

## 9.11 Confined Spaces

SCEE Project Management is committed to identifying oxygen deficient atmospheres (containing less than 19.5% oxygen), oxygen rich atmospheres, and environments that have gases or pollutants that have the potential to cause injury to any worker.

Project Management shall ensure detailed risk assessments are carried out once an environment has been identified as being potentially harmful. The risk assessment shall require use of air monitor devices to measure an atmosphere. Common environments that have the potential to cause injury are trenches, ducting and vessels.

Confined spaces shall be clearly identified and all isolations verified prior to the commencement of work. A confined space sentry is required at all times whilst personnel are in the confined space. Access and egress will be controlled with no other work/task undertaken by the sentry.

Atmospheric testing shall be conducted prior to and during confined space work. This testing shall be completed by a qualified 'Gas Tester' at a frequency appropriate to the type of environment in the confined space or the type of work being undertaken.

A confined space rescue plan shall be required for all work undertaken in confined spaces. Workers entering the confined space may be required to wear a suitable confined space harness to assist with potential rescue situations.

Project Management shall ensure appropriate controls are considered for all confined spaces. Consideration shall be given to:

- Compliance with applicable Australian Standard (AS 2865)
- Eliminating the need to enter a confined space
- Isolating a confined space area
- Engineering out the hazard i.e. extraction fans
- Safe work methods i.e. stand by attendants
- Personal protective equipment i.e. breathing apparatus
- Ensure a safe system of work exists so that the hazards of working in a confined space are reduced to an acceptable level
- Only trained competent workers work in the confined space

Refer: [SCEE-BS-HS-PRO-0014 Confined Space Entry \(High Risk\)](#)  
[SCEE-BS-HS-TEM-0031 Confined Space Permit](#)

## 9.12 Excavations and Penetrations

All excavations on site will be carried out in accordance Hansen Yuncken Excavation, Penetration and Earth Work requirements. All excavations and penetrations will comply

with the referenced procedures and require the issue of an Excavation Permit or Penetration Permit and the use of hard barricading as required.

Where a worker is required to work in an excavation that is at least 1.5 metres in depth, the excavation or earthwork shall be shored, benched or battered in a manner which will prevent it from collapsing or moving.

SCEE Project Management and Supervisors will be familiar with and incorporate Hansen Yuncken excavation procedures and permits into their work procedures.

Refer: [SCEE-BS-HS-PRO-0021 Trenching and Excavating \(High Risk\)](#)

### 9.13 Isolation of Plant and Equipment

Project Management shall ensure that prior to workers being permitted to work on equipment or electrical systems that have a potential to become live, Hansen Yuncken's isolation lock and tag-out procedures have been communicated to all SCEE workers via a formal training session. All training shall be documented and recorded in the project training matrix.

A lock register will be maintained for all isolation locks issued to SCEE site personnel.

No personnel shall work on or near isolated plant and equipment unless they have applied a personal isolation lock and tag. A lock and tag will be applied to a scissor clip at an isolation point or to a permit lock box. Personnel shall sign onto the isolation permit if they are working under an isolation permit.

Light Vehicle Isolation requirements when performing a pre-start shall be for the individual completing the pre-start to have possession of the ignition key in their pocket.

SCEE Project Management shall ensure Hansen Yuncken's isolation and lock and tag-out procedures are strictly complied with.

### 9.14 Hot Work

Hot Works will include but is not limited to:

- Grinding
- Hot cutting
- Oxy acetylene welding
- Electrical welding
- Cad Welding
- Any other process that produces or has the potential to cause a spark or ignition source

Where hot work is to be performed within a designated fire risk area or an area that is not normally a designated hot work area, a hot work permit shall be issued by authorised permit issuers.

A designated fire watch shall be required if it is identified during the risk assessment process (i.e. JHA) that there is a credible risk of a fire from the works being undertaken unless

otherwise directed by Hansen Yuncken. This will be determined based on the type and nature of the hot works conducted, identification of combustibles in the surrounding area, wind/weather factors and the ability or inability to contain the hot works. This is to be documented in the JHA and Permit to Work (if required) and approved by the relevant Supervisor in control of the works. Any fire watch is required to be aware of how to operate a fire extinguisher.

A fire extinguisher shall be available of hot work being undertaken. Where hot works are to be undertaken, the direct area should be clear of combustibles and welding screens used as required. Gas testing shall be conducted prior to any hot work within an area with a suspected flammable atmosphere.

Oxy welding shall be performed in compliance with AS 4839: The Safe Use of Portable and Mobile Oxy-Fuel Gas Systems for Welding, Cutting, Heating and Allied Processes. Flashback arrestors must be fitted to both lines of the handpiece and to the cylinder.

Compressed gas cylinders are to be secured upright and not exposed to extreme temperatures. They shall be stored and segregated in accordance with AS 4332: The Storage and Handling of Gases in Cylinders and Hansen Yuncken standards. Lifting cradles and hand trolleys are to be used to minimise manual handling risk.

Refer: [SCEE-BS-HS-PRO-0015 Hot Work \(High Risk\)](#)  
[SCEE-BS-HS-SWM-023 Welding](#)  
[SCEE-BS-HS-TEM-0033 Hot Works Permit](#)

## 9.15 Drilling into Cable Ladder and Panels

Any task that requires drilling into a cable ladder or a panel with cables installed will only be conducted under a permit.

This requirement applies no matter whether cables are live or de-energised, if the ladder is full or has only one cable installed.

The permit will be signed by the nominated Project Supervisor and HSE Advisor if one is allocated to the project.

Refer: [SCEE-BS-HS-TEM-0034 Drilling Near Cable Permit](#)

## 9.16 Driving

All driving must comply with the SCEE's Journey Management Procedure SCEE-BS-HS-PRO-0022. Driving in particular must be managed to delay the onset of related fatigue, specifically:

- Plan all journeys; drive to road and weather conditions at all times but as a minimum standard obey the road rules
- Stop and rest for 15 minutes every 2 hours, with a minimum 30 minute break after 6 hours of driving

- Maximum driving time in any 24 hours is 10 hours with a minimum 10 hours rest afterwards
- Maximum 3 days driving 6 hours or more per day with a minimum of 1 rest day afterwards
- No driving if no sleep in the 16 hours prior to commencement of driving.

Drivers will only operate a vehicle when:

- They are medically fit to operate the class of vehicle being used.
- They assess the suitability and safety of the vehicle prior to any journey being undertaken.
- Have completed a verification of competency (VOC) where required
- They are not under the influence of alcohol (zero BAC reading) or drugs and are not suffering from fatigue or impairment.
- They do not operate cell phones (whether handheld or hands free) while operating the vehicle.
- They have the applicable licence to drive the class of vehicle they are operating.

Passengers will only travel in a vehicle when:

- They assess the suitability and safety of the vehicle prior to commencing the journey.
- They assess the suitability of the driver's competency to undertake the journey
- The vehicle is fit for use – Keep it clean, report any damage.

Refer: [SCEE-BS-HS-PRO-0022 Journey Management Procedure](#)  
[SCEE-BS-HS-PRO-0027 5 Star Commitment Procedure](#)

## 9.17 Machinery and Vehicle Inspection

All company machinery and vehicles shall as a minimum, be serviced in accordance with the manufacturers recommended intervals and in accordance with regulated requirements.

Additionally:

- Project supervision shall ensure that suitably qualified personnel carry out regular maintenance
- Records shall be maintained of all inspections carried out
- MEWP's/Scissor Lifts and Cranes shall have documented annual inspections carried out
- Site administration shall provide a copy of all service records to SCEE head office on a weekly basis
- Inspections shall be carried out on all vehicles prior to mobilisation to site ensuring that the vehicle is free from weeds and seeds and that it is in sound serviceable condition
- When performing maintenance, cleaning or repairs, the plant shall be stopped and isolated using the site lockout or isolation procedures. This may require the use of danger tags or permit to work systems.

SCEE Project Management will comply with the requirements of site procedures for Vehicles and Mobile Plant mobilisation and maintenance.

Site supervisors shall ensure all operators' logbooks are completed on a daily basis and that operator manuals are available and in good condition. Logbooks shall be retained in the vehicle at all times.

All defects of any machinery shall be logged in the Plant and Equipment Maintenance Register.

A detailed planned maintenance program for all equipment shall be maintained in Stems.

## 9.18 Cranes, Lifting and Rigging Equipment

Prior to use on the Project, a competent person shall inspect all cranes, lifting equipment and complete a mobilisation inspection form for submission to Hansen Yuncken. This inspection report shall include:

- Serviceability
- Certification
- Working Load Limits (WLL must be displayed at all times)
- Component inspections (e.g. crane rope, block, etc.)
- Compliance with statutory and site requirements
- Cranes, mobile elevated work platforms and other lifting equipment shall be inspected daily and recorded in the daily inspection logbook

Cranes shall have annual inspections conducted on them and copies of the inspection will be placed with the machine and in the SCEE site office. An entry pertaining to the next inspection date will be recorded in the plant and equipment maintenance register.

All rigging and lifting work shall be performed in accordance with statutory requirements. Only certified persons (rigger, dogman, crane driver) shall lift, rig up or supervise lifts. Lift analysis (JHA) shall be conducted for all heavy or difficult lifts.

All lifting equipment used by the company shall be subject to regular inspections to ensure adequacy for use, this includes all slings, shackles and hooks etc. Cranes, mobile elevated work platforms and other lifting equipment shall be inspected daily and recorded in the daily inspection logbook.

Inspections shall be carried out by a certified crane driver, dogman or riggers to gauge suitability for use and subsequently logged on the lifting equipment.

All items shall be colour coded to verify inspection status. The colour coding shall be in accordance with the electrical colour coding system.

<b>Red</b>	-	<b>December to February</b>
<b>Green</b>	-	<b>March to May</b>
<b>Blue</b>	-	<b>June to August</b>
<b>Yellow</b>	-	<b>September to November</b>

Makeshift lifting equipment shall not be used under any circumstances. Items found that do not meet a safe standard shall be withdrawn from use immediately, marked with a danger tag by the person carrying out the inspection and sent to head office for repair / disposal.

Refer: [SCEE-BS-HS-WIN-0026 Crane Activity](#)  
[SCEE-BS-HS-SWM-0019 General Mobile Crane Work](#)

## 9.19 Forklift Operation

Operators of forklifts on SCEE work sites shall have a Licence to Perform High Risk Work endorsed with load shifting equipment classification LF (Forklift Truck). Operators of telescopic handlers (Manitou) are required to have a certificate of competency for telescopic materials handler.

Operation of forklifts and Telehandlers shall be in accordance with SCEE Work Instruction on forklifts.

Refer: [SCEE-BS-HS-WIN-0027 Forklifts](#)  
[SCEE-BS-HS-WIN-0034 Telehandlers](#)

## 9.20 Loading and Unloading

When loading or unloading on site, the following shall be adhered to:

- Inspect loads before un-securing to ensure it is safe and cannot not shift once binders are released.
- Personnel are not permitted to stand on the offside of the truck during loading and unloading. This area is to be demarcated with cones and flags and personnel are to monitor that this area is clear prior to any touching or movement of loads.
- No person/s is permitted to be on or climb onto an open tray without appropriate working at height protection; fall restraint protection such as gates or side rail protection will be a minimum of 900mm.
- Use of over centre binders to secure loads are not permitted, ratchet type binders or webbing straps shall be used.
- Chains and strapping should be protected from sharp edges.
- Inspection of load restraint equipment should be conducted prior to use.
- Unloading or loading in non-designated areas will be performed away from traffic flow to minimise interface issues.
- Rolling equipment is to be adequately secured to prevent rolling during transport.
- Dedicated lifting and tie down points of equipment are to be used.
- Due to the inherent risks associated with lifting, moving or relocating transportable buildings, this task shall only be conducted using a crane. The use of a 'Tilt-Tray' vehicle is permitted only once a risk assessment has been undertaken.
- All loading docks and ramps shall be engineered/ purpose-made and authorised for use.
- Loading ramps should be assessed to ensure they are rated for the weight and positioned correctly for the width of the equipment.
- Designated loading and unloading areas should be utilised where possible.
- Spotter should be used as required.

- Drivers shall remain clear of loading and unloading activities and to remain under the direction of the SCEE escort.
- The offside during loading and unloading should be a no go zone for all personnel.
- Non-inducted drivers to be escorted and informed of site requirements.

## 9.21 Mobile Elevated Work Platforms (MEWP's)/Scissor Lifts

Project Management shall ensure all operators of MEWP's/Scissor Lifts:

- Thoroughly inspect the MEWP/Scissor Lift for any damage, and record any defects on the operator's logbook and report it to the supervisor
- Fill in the operator's logbook and have the supervisor sign off before operating the machinery
- Wear an approved safety harness with a lanyard attached securely to the correct anchor point within the basket
- Write a JHA for task as required
- Have a designated trained spotter
- An emergency response plan shall be developed

Project Management shall ensure all MEWP's/Scissor Lifts are serviced and have a safety inspection conducted at no greater than 1 year by an independent Inspector. Servicing will be done as per the manufacturer recommendations. This service shall be recorded in the operator's logbook.

Refer: [SCEE-BS-HS-WIN-0019 Mobile Elevated Work Platform \(High Risk\)](#)

## 9.22 Scaffolding and Static Lines

The erection and dismantling of scaffolding and static lines shall be carried out by a licensed scaffolder or under the direct supervision of a licensed scaffolder. All static lines and scaffolds shall be inspected for damage on a daily basis. Scaffolds and static lines shall be registered on a Scaffold and/or Static Line Register.

Project Management shall ensure:

- All scaffolds have handrails, mid rails, toe boards and access ladders
- Only appropriately certified personnel will carry out scaffolding erection
- Scaffolds are erected and dismantled using the Scafftag scaffolding tagging system and to site construction requirements.
- The appropriate Scafftag insert is filled out and the Scafftag displayed on every scaffold whether under construction in use or being dismantled
- All scaffolders shall be protected at all times from falls during the erection and dismantling of scaffolds
- Aluminium scaffolds, ladders and harness clips shall not be used in MCC's, substations or where caustic material is present.

Refer: [SCEE-BS-HS-WIN-0004 Scaffold Safety](#)  
[SCEE-BS-HS-SWM-0013 Erecting/Dismantling Scaffold](#)  
[SCEE-BS-HS-SWM-0014 Working on Scaffold](#)

## SCEE-BS-HS-TEM-0014 Scaffold Register

### 9.23 Barricading

Temporary hard barricading shall be in place around all areas where people may be exposed to hazards, such as:

- Being struck by materials (Falling Objects): Under EWP baskets and under personnel working at height
- Falling into open excavations or penetrations
- Cranes & EWP's (Around slew radius & drop zones)
- Hot Work areas
- Blind side of a truck whilst being loaded/unloaded; and
- Any area that requires the exclusion of unauthorised personnel.

The following types of barricading shall be used:

- Hard barricading shall be utilised when an area is required to be completely enclosed to prevent unauthorised entry into a hazardous area (Falling Objects, Crane Slew Radius (not required with Franna Cranes) etc.);
- Traffic cones shall be used around the slew area of an EWP main body or used for temporary delineation to highlight the presence of trip hazards of plant, equipment or materials;
- Hard barricading shall be used around all trenches, excavations, the open sides of all floors, floor openings, stairwells, roofs, platforms and walkways from which a person can fall any distance or where personnel are working above.

Barricading should be kept at least one metre from the edge of an open trench, excavation or danger area, and must provide a clear visual warning.

Personnel shall comply with the following:

- At no time are personnel allowed to cross over, under or through barricades
- When using hard barricading (e.g. crowd control barricading), panels shall be locked together. Hard Barriers are to be rigid and continuous
- Barricading and signage shall be inspected & maintained daily
- Authorisation from the supervisor or delegate must be obtained prior to removing barricading that was erected by another work group
- When the task the barricading has been erected for is complete or has changed, all signage shall be removed and the barricades packed away
- Barricading shall be removed when no longer in use.

Barricade Signage/Information Tags

- Additional signage shall be used to identify specific hazards e.g. Grid Mesh removal, Falling Objects, Hot Work, Excavation, Workers Above, or Crane Slew Zone etc.
- Barricading should have signage at least every 6 metres identifying its use

- Information tags shall be in place on all sides of barricading, detailing works in progress and a contact name and contact details of the supervisor (i.e. radio channel, phone number)
- Exclusion zones shall be barricaded without an entry point and appropriate signage attached (e.g. Exclusion Zone, Do Not Enter; Drop Zone, Do Not Enter);

Where personnel are required to access or egress a barricaded area, entry and exit points used shall be clearly identifiable with entry gates and with entry / exit signs. Positive communication is essential and required by all parties involved to make sure entry is safe.

The following personnel are responsible for the barricade:

- Crane slew zone - Crane Operator
- EWP drop zone - Spotter
- Blind side of truck - Truck driver
- General work area – Supervisor

## 9.24 Inclement Weather

In any situation where inclement weather conditions do or are likely to affect safe work, affected workers and the SCEE supervisors shall consult and seek the best method for completing work safely or shall seek alternate safe work if available. Contingency plans should be reviewed as the project progresses to identify work areas or tasks that can be performed during inclement weather.

In emergencies work may continue, or as agreed in circumstances such as when provided with systems or procedures (i.e. to unload trailers or complete concrete pours), during periods of inclement weather where it is agreed that to **not** move or protect equipment or goods, substantial loss may occur, or substantial risk is present.

Refer: [SCEE-BS-HS-PRO-0011 Inclement Weather Management](#)

## 9.25 Traffic Management

Traffic Management Plans will be required for situations where activity will necessitate a full or partial road closure or traffic diversion or detour that will impact on operational activities and traffic movement.

Plans must normally be submitted to Hansen Yuncken for approval a minimum of 72 hours prior to the activity commencing. All drivers and operators must comply with Traffic Management Plans as per their scope of work.

SCEE shall work in compliance Hansen Yuncken Traffic Management procedures.

Refer: [SCEE-BS-HS-TEM-0046 Traffic Management Template](#)

## 9.26 Use of Power and Hand Tools

SCEE supervisors shall ensure that all personnel are supervised in the selection, use and maintenance of power and hand tools they are required to use. All personnel will be informed on the use and maintenance requirements of hand and power tools.

During the SCEE Site Induction and periodically at Pre-start and Toolbox Meetings personnel will be reminded of their responsibilities before and during the use of power and hand tools.

These responsibilities include but are not limited to:

- Ensuring that power tools have a current quarterly test tag attached
- Checking the tool prior to use for damage to the tool or power lead
- Any equipment that is defective, damaged or untagged will not be used and such equipment will then be tagged with an Out of Service tag and reported to the Supervisor.
- Ensuring that all mains powered electric tools are fitted with a “Dead man” switch
- Wear the appropriate and correct PPE for the task
- Ensure the correct tool is used for the task and is used as per the manufacturer’s recommendations
- Ensuring that all 240 volt (or above) power tools are connected to an approved industrial type RCD
- Ensure the correct guards are fitted and in good condition
- Work pieces are clamped where possible
- Ensuring that tools are not lifted or carried by their electrical leads

All power tools will be required to undergo quarterly testing and tagging procedures as per AS/NZ 3760 and will be recorded on the project electrical equipment register. The quarterly test tag colours are defined as:

<b>Red</b>	-	<b>December to February</b>
<b>Green</b>	-	<b>March to May</b>
<b>Blue</b>	-	<b>June to August</b>
<b>Yellow</b>	-	<b>September to November</b>

Refer: [SCEE-BS-PO-TEM-0038 Electrical Equipment Register](#)  
[SCEE-BS-HS-PRO-0030 Hand and Power Tools](#)

## 9.27 Banned Tools Onsite

The following tools are considered to present an unacceptable level of risk and as such are not permitted to be used on site.

- 9 inch (230mm) grinders
- 1.5mm knifing/cutting discs
- Open blade knives and trimming knives (i.e. Stanley etc.)
- Hardened steel hammers
- Crow bars without a cap at one end
- Oxy / Acetylene systems not fitted with Flash back Arrestors
- Adjustable spanners or shifters

- Over-centre type Binders
- Atra Ace WO 3250 Mag Drills.

## 9.28 Plant and Equipment Other

### 9.28.1 Safe Systems of Work

Safe systems of work shall be established for the operation of powered mobile plant on site, taking into consideration the OEM manual, outcomes from plant risk assessments, site-specific requirements, and the requirement for ROPs and FOPs. The safe system of work shall be documented in a safe work method statement, which shall be reviewed by SCEE Electrical supervision prior to work commencing, using the form SCEE-BS-HS-TEM-0043 Safe Work Method Statement Document Review.

Safe Work method statements and exclusion zones are used to mitigate risks, supported by regular supervision, communication and ongoing monitoring.

SCEE will maintain the details of plant and equipment used on the project on the SCEE HSE Master Register.

Only trained, competent persons are to operate plant and equipment on site. Evidence of their plant tickets and if required Verification of Competency are maintained and summarised on SCEE-TR-TD-GUI-0001 SCEE Global Training Needs Analysis (TNA).

**Refer:** [SCEE-TR-TD-GUI-0001 SCEE Global Training Needs Analysis](#)

### 9.28.2 Plant Risk Assessment and Inspections

All plant utilised in the project, including the subcontractors, will comply with the relevant legislation, associated standards and project requirements.

All items of powered mobile plant will be inspected, and risk assessed before commencement of work using SCEE-BS-HS-TEM-0002 Plant Risk Assessment, and approved for site using SCEE-BS-MV-TEM-0013 Plant Access Request form, to ensure that risks associated with an item of plant is identified and managed, the plant is fit for purpose, meet the relevant safety specifications and is in a serviceable condition. The purpose and scope of work specific to the plant and site conditions is considered.

All mobile plant and light vehicles mobilised to site shall be inspected as per SCEE-BS-MV-PRO-0002 Plant and Equipment Access Procedure and SCEE-BS-MV-TEM-0008 SCEE Equipment Hygiene Certificate and confirmed fit for use on site by a Site Superintendent or delegate.

**Refer:** [SCEE-BS-MV-PRO-0002 Plant and Equipment Access](#)

SCEE-BS-MV-PRO-0003 Equipment Hygiene Inspection  
SCEE-BS-MV-TEM-0013 SCEE Plant Access Request Form  
SCEE-BS-HS-TEM-0002 Plant Risk Assessment  
SCEE-BS-MV-TEM-0008 SCEE Equipment Hygiene Certificate

### 9.28.3 Installation/Commissioning/Demolition

Plant must not be installed, commissioned, dismantled or decommissioned unless it has been established that it is safe to do so and will be done without risk to the health and safety of any person at the workplace.

A worker who installs, assembles, constructs, commissions or decommissions or dismantles the plant must be deemed a competent person. They must be provided with all information necessary to eliminate or minimise risks to health, safety and environment.

The processes for the installation, construction, commissioning, decommissioning and dismantling of plant will include inspections that ensure that risks associated with these activities are monitored and reduced to ALARP.

All Plant and Equipment prior to the processes of installation, construction, commissioning, decommissioning will be barricaded off to the general workforce to ensure alterations or interference with the plant is not undertaken without Site Management acknowledgement.

### 9.28.4 Fit for Purpose

Plant must be used only for the purpose for which it was designed. Where plant is not used for its designed purpose a risk assessment must be completed by a competent person to determine if there is an increase to the health or safety of workers.

Plant that is not in use at the workplace must be left in a state that does not create a risk to the health or safety of any person.

Guards must be in place that are of solid construction and securely mounted to the plant. Guards should be properly maintained in order to not create a risk in itself. If guarding is removed from the plant, then controls must be in place to ensure it can't be restarted unless the guarding is replaced.

### 9.28.5 Plant and Equipment Controls

Operational controls must be easily identified on the plant to indicate their nature, function and direction of operation and located so they are readily and conveniently available to be operated by each person using the plant. The controls must be able to be locked in the off position to enable the disconnection of all motive power.

Operational controls must be guarded, controlled or located so that they cannot be unintentionally activated. Operation controls must be able to be locked in the off position when required.

Any controls not identifiable or guarded must be reported to your supervisor and the area secured.

## 9.28.6 Maintenance/Inspection of Plant

Maintenance, inspection and, if necessary, testing of the plant must be carried out by a competent person in accordance with the manufacturer's recommendations and recorded in SCEE HSE Master Register. If there are no manufacturer's recommendations then the maintenance, inspection and/or testing must be conducted in accordance with the competent person's recommendations or in relation to inspections as approved by Site Management.

## 9.28.7 Plant Record Details

To ensure proper tracking and management of plant and equipment, SCEE requires that a Plant and Equipment Register be completed within SCEE-BS-HS-TEM-0065 HSE Master Register for all existing plant and equipment, as well as for any plant and equipment that is purchased, trailed, or hired. This register must be created prior to the introduction of any new plant and equipment on site, ensuring that all necessary safety documentation, maintenance records, and risk assessments are associated with each item. The register includes critical details such as equipment type, make, model, registration numbers, and specific safety and compliance certifications, ensuring that all equipment is properly tracked, maintained, and compliant with site safety requirements.

Refer: [SCEE-BS-HS-TEM-0065 HSE Master Register](#)

## 9.29 Fire Prevention

SCEE Project Management recognises that fire is the single most preventable occurrence that has the potential to cause the greatest loss. SCEE Project Management is committed to a fire prevention program that shall consist of:

- Fire extinguishers being located at SCEE work locations
- Fire extinguishers being inspected and tagged on a six monthly basis by a fire equipment service company or qualified personnel on site
- Hot work permits system being adopted and implemented for all hot works by SCEE workers as per site requirements

Portable Fire Extinguishers will comply with AS 1841 and be maintained to AS 1851.1

Refer: [SCEE-BS-HS-WIN-0029 Fire Extinguisher Inspection](#)  
[SCEE-BS-HS-PRO-0015 Hot Work \(High Risk\)](#)  
[SCEE-BS-RM-WIN-0004 Gas Bottle Handling and Storage](#)

## 9.30 Electrical Safety

Project Management shall ensure:

- All electrical work is carried out in accordance with the relevant state or territory electrical regulations and AS/NZS 3000 Wiring Rules

- Only qualified electricians carry out or supervise electrical work
- All portable electrical equipment and electrical leads are inspected and tagged on a quarterly basis
- All portable electrical equipment and electrical leads are visually inspected prior to each use
- Residual Current Devices (RCD's) are used on all electrical circuits from the General Purpose Outlet (GPO) including portable generators
- All electrical leads and extensions are routed off the ground or along edges where possible, to remove the tripping potential and to prevent damage and ingress of moisture
- Any person carrying out high voltage work completes Hansen Yuncken's Permit Procedures
- The strictest compliance to Hansen Yuncken's isolation and tag-out procedures are adhered to

All Electrical Work shall be conducted in accordance with Hansen Yunckens Electrical Specifications, Isolations and Permit to Work systems.

Refer: [SCEE-BS-HS-PRO-0020 Safe Electrical Work Procedure](#)  
[SCEE-BS-HS-PRO-0005 Electrical Isolation and Tag Out](#)  
[SCEE-BS-HS-TEM-0071 Electrical Isolation Permit](#)

### 9.30.1 Electrical Isolations

When a circuit or equipment has been isolated by an Authorised person to enable work to be carried out on or adjacent to such equipment, an approved isolation lock is to be attached to the approved isolation device, danger tag attached to the lock signed and dated by the worker carrying out the isolation. If multiple persons are to work on the isolated equipment, an approved multi-lock device with individual locks and tags attached by each person shall be used.

- Danger tags and locks are to be securely fixed to the operating handle or button of the equipment so that there is no risk of their being accidentally dislodged or of an operator being able to operate the equipment without seeing the tag.
- No switch may be operated whilst a lockout device and danger tag is attached.

All electrical isolations shall be achieved by a physical air gap or by the use of a suitable locking device.

Prior to commencing work on any electrical equipment, a test for dead shall be completed with a suitably calibrated device.

After any break in work or change of conditions a re-test for dead shall be completed prior to recommencing any electrical work.

A lock and danger tag may only be removed by the person whose signature appears on it, except that in the circumstances where the owner of the danger tag and lock is unavailable due to leave, illness or other cause, the Authorised Person or the delegate and appropriate

Hansen Yuncken authority may remove the lock and tag, but only after complying with the following conditions:

- They shall acquaint themselves with the reasons for the lock and tag being attached
- They shall carry out all necessary inspections and tests on the circuits/equipment to make certain that such may be operated without danger to person or equipment
- They shall ensure that all persons associated with the work are informed of their action
- Incident report shall be completed

No live work shall be undertaken. At all times equipment is to be isolated prior to conducting work in accordance with the site isolation procedures. In addition to this:

- All electrical equipment must be treated as live, until proven de-energised.
- A "Test Before You Touch" in accordance with isolation regulations shall be performed to confirm there are no live exposed parts prior to commencing the work, and prior to recommencing the work where the work has been paused for any period of time.
- All electrical isolations shall be locked out and performed by an authorised isolation officer.
- Certified voltage testers shall be tested for correct operation before use and after use to confirm it is operating effectively.
- Proximity Testers shall not be used to confirm the presence of live voltage
- Panel Volt Meters shall not be relied on to confirm an electrical part is de-energised.

Refer: [SCEE-BS-HS-PRO-0005 Electrical Isolation and Tag Out](#)  
[SCEE-BS-HS-PRO-0020 Safe Electrical Work Procedure](#)  
[SCEE-BS-HS-TEM-0071 Electrical Isolation Permit](#)

### 9.30.2 Working in the Vicinity of Live Power Lines

When it is required to work in the vicinity of live Power Lines, workers must report to their supervisor before commencing work and undertake a separate approval process with a specific task risk assessment attached.

- Hansen Yuncken Vicinity Permit to be implemented and followed
- If achievable, Earthing and short-circuiting of a high voltage overhead line, shall be affected at a place which, is visible from the site where work is to be carried out on such line.
- Earth Sticks are to be tagged (current). Modiewark's are to be tagged (current).
- Such earthing and short-circuiting shall be carried out on both sides of the site.
- Where no known permanent earthing facilities are available, earth connection shall be made by means of a metal rod not less than 13mm diameter or a metal stake of equivalent cross sectional area driven vertically into the ground to a depth not less than 60mm.
- Except in a case of emergency involving danger to human life, a person shall not earth or short-circuit a high voltage overhead line otherwise than with equipment provided by SCEE for the purpose.

A Vicinity Permit shall be completed for work required to be performed within a 10 meter horizontal exclusion zone from electrical power lines. Particular care should be taken with crane booms or hooks which may luff or slew into the area of exclusion.

Refer: [SCEE-BS-HS-TEM-0070 High Voltage Vicinity Permit](#)

### 9.30.3 High Voltage Work

All High Voltage Mains and Apparatus Shall be regarded as Alive until Proven Dead.

#### Minimum Safe Working Distance

Where workers work in the vicinity of exposed live high voltage mains and apparatus, personnel shall not allow any portion of their bodies or any object or tool (other than equipment issued for testing, operating or working on live voltage mains and apparatus) which they are handling to come within the minimum safe working distances from exposed live high voltage mains and apparatus.

Due to states and territories, having varying distances sites shall determine minimal safe working distances with the asset owner before commencing any work.

When it is likely that a worker's body or any object which they might be carrying would come within the distance specified above, insulating screens must be erected or the exposed live high voltage mains and apparatus must be made dead and isolated and earthed. Site specific vicinity permits may be required.

Except when authority is given and special tools and equipment are provided for working on high voltage mains and apparatus, high voltage mains and apparatus must not be worked on until:

- They have been isolated from all possible sources of supply; and
- Danger notices have been displayed on or adjacent to all devices and controls through which the mains and apparatus may be energised; and
- They have been proved dead; and
- They have been earthed and short circuited; and
- Barriers have been erected where necessary; and
- An access permit has been issued.

Where high voltage mains and apparatus to be worked on are divided into two or more sections, the above requirement shall be observed with regard to each section.

Note: Voltage transformers as well as power transformers are a possible source of high voltage supply and must be isolated on both the high and low voltage sides.

HV work may include the removal and de-termination of existing cable and re-installation and termination of new HV cable. Isolations shall occur at the relevant switch room and switch gear prior to any HV work.

Permits shall be used whenever access or isolations to switch room equipment is required.

For all High Voltage work:

- The permit recipient will be appropriately trained
- A permit shall be raised
- The circuit shall be isolated to confirm the circuit is de-energised and earthing interlocks, where fitted, are engaged.

### 9.30.4 Temporary Power

Any works involving “Temporary Power” shall be carried out in accordance with SCEE-OP-OP-WIN-0025 Temporary Power Work Instruction, which outlines the step-by-step activities or tasks required to safely and effectively install temporary power to site.

Refer: [SCEE-OP-OP-WIN-0025 Temporary Power Work Instruction](#)

### 9.30.5 Electric Shocks and Events

All electrical shocks and events require immediate attendance at the medical centre.

Electric shock events must be reported to the SCEE Site Manager, Project Manager, HSE Advisor, the Nominated Hansen Yuncken Electrical Supervisor and Hansen Yuncken HSE Manager immediately regardless of the severity. The nominated SCEE electrical representative for all suspected electric shock events is the SCEE Learning and Development Manager. The Learning and Development Manager is to be notified following all actual or suspected electric shock events and will participate in the incident investigation. All notifiable incidents will be reported to the applicable regulator through Hansen Yuncken HSE Manager or SCEE Electrical Representative within the required time frames.

If you come across a person receiving an electric shock:

- Assess the situation – never put yourself at risk
- Take precautions to protect yourself and anyone else in the vicinity
- Have someone report the incident to the supervisor and contact emergency services
- If possible, disconnect the supply
- Assess the injuries and if safe to do so, move the casualty to a safe area
- Administer first aid if trained
- Ensure the incident scene is not disturbed

Any person who has received an actual or potential shock is to attend the medic or hospital for an ECG to monitor heartbeat rhythm.

Refer: [SCEE-BS-HS-PRO-0004 Event Management and Investigation](#)  
[SCEE-BS-HS-WIN-0006 Event Reporting](#)  
[SCEE-BS-HS-GUI-0001 Event Notification Guide](#)

## 9.30.6 Electrical Fires

Electrical fires may result from:

- The overheating of circuits
- Machines running too slowly for long periods due to insufficient electrical power
- Machines driven beyond their intended capacity
- Oil and dust being allowed to accumulate on motors etc.
- Overheating of equipment by:
  - Too much equipment on the same circuit
  - Too large a fuse being used in a circuit

Only use a CO2 or dry chemical extinguisher on an electrical fire. Fire extinguishers must be kept near main switchboards and substations as a minimum.

## 9.31 Noise Control and Occupational Hygiene Monitoring

On the project the use of iPhone, MP3's and similar devices fitted with ear phones/pieces are not permitted. The use of mobile telephones is restricted as per Section 9.4.

The continuing assessment of worker noise exposure levels will be an ongoing process throughout the project. Project management shall ensure that all plant or equipment identified as generating excessive noise above prescribed levels will be properly identified and signposted. Exposure times and or time weighted averages shall be discussed at prestart and toolbox meetings along with the appropriate protective hearing devices and instructions on their use.

Worker awareness and monitoring of occupational stressors including vibration, dust, fibrous materials, chemical exposure, ergonomics and manual handling will be undertaken by SCEE Project Management.

Refer: [SCEE-BS-HS-PRO-0009 Noise Control and Hearing Protection Procedure](#)  
[SCEE-TR-TD-GUI-0001 SCEE Global Training Needs Analysis](#)  
[SCEE-OP-OP-PRO-0003 Measuring and test equipment](#)

## 9.32 Health Surveillance

Health Monitoring will be conducted in accordance with state Regulations. An initial review of potential health surveillance issues will be conducted when the Project is in the planning stages and requirements documented in the Project Risk Register. On-going reviews will be conducted throughout the Project lifecycle, through workplace inspections and consultation forums such as daily prestart and toolbox talks.

Where legislatively required or as determined by risk assessment, personal exposure monitoring will be conducted to confirm Project site controls are meeting legislative requirements. This can include engaging external specialists to determine exposure rates.

All records which are determined as relevant by a medical doctor / health practitioner will be communicated back to the relevant workers. Such records demonstrate that health

surveillance / exposure monitoring information has been provided to relevant workers and in turn all health records are stored appropriately, kept for the minimum time recommended by law and made available to individuals or their medical doctor upon request.

If the outcome of the project risk assessment determines surveillance is required health surveillance records shall be maintained confidentially in worker's personnel files, with ongoing surveillance coordinated by the Human Resources department.

All personnel conducting health surveillance and monitoring shall be a formally trained Occupational Hygienist competent to conduct testing. Where external parties are used, the company providing workers shall prove their competence prior to completing monitoring activities.

Calibrated Equipment: Equipment, which is used for health surveillance, for example alcohol testers, gas testers, dosimeter, and radiation meter will be required to be calibrated by an approved laboratory as per SCEE-OP-OP-PRO-0003 Measuring and test equipment and placed on SCEE-BS-HS-TEM-0065 SCEE Electrical HSE Master Register.

A site-specific assessment of potential health hazards, including biological, physical, and chemical/atmospheric contaminants shall be conducted by a competent person holding, at a minimum, a Certificate IV in Work Health and Safety.

Personal exposure to identified health hazards shall be measured and evaluated on the project by a competent and formally trained Occupational Hygienist. As a minimum the Occupational Hygienist will hold a Graduate Certificate of Occupational Hygiene Practice or equivalent to.

Refer: [SCEE-BS-HS-TEM-0065 SCEE Electrical HSE Master Register](#)  
[SCEE-OP-OP-PRO-0003 Measuring and test equipment](#)

### 9.33 Fibrous Materials

SCEE Project Management shall ensure that all workers are made aware of the risks associated with fibrous materials, the risk control measures and their role within that procedure.

Refer: [SCEE-BS-HS-TEM-0002 Dust Fibrous Material Management Plan](#)

### 9.34 Simultaneous Work Activities

At times SCEE personnel will be working in areas with simultaneous work activities occurring. For example, shut down operations with other contractors or carrying out installation activities where normal construction works are underway. In order to assist in the management of simultaneous work activities in such a way as to eliminate or minimise the risk of fatalities, injuries or events, the following should be discussed and implemented where practicable:

- Coordination meetings with relevant contractors to discuss work schedules
- Hansen Yuncken may be advised of proposed work activities at weekly progress meetings

- Field supervision (SCEE and other contractor) may have interface meetings on the work site to delineate work areas and coordinate movement
- Traffic Management Plans, crane activity, safety notices and bulletins regarding planned activities are communicated during prestart and toolbox meetings
- Permit and area access restrictions may be designated
- Barricades, flagging and bunting can be set up and information tags used to communicate work and access details

Where workers are working above or below other workers, supervisors shall encourage the communication between work groups and ensure that the separate work areas are appropriately set up. This may include providing overhead protection, erecting a barricaded drop zone, using drop sheets and removing personnel from potential line-of-fire positions.

The schedule for interface meeting should be agreed between all stakeholders prior to the work commencing. Interface meetings would normally be held fortnightly or monthly but in environments such as shutdowns, work adjacent to operating plant or equipment or in dynamically changing environments; meetings will be more frequent.

### 9.35 Management of Change (MOC)

SCEE recognises uncontrolled change at the work front as a significant risk.

Measures to reduce the risk of incidents, injury, equipment failures and damage arising from change events must ensure:

- Change is managed in a structured and uniform manner in line with the SCEE and Hansen Yuncken HSE management systems.
- Work crews are included and have input into the change management process
- A Risk Assessment is conducted
- Controls deliver the required outcome, and risk is reduced as low as practicable
- No new hazards to persons, equipment or the project are introduced
- Documents are reviewed and updated in line with the appropriate document control procedures

Any permanent or temporary changes to the SCEE work front shall only proceed if:

- A Risk Assessment is completed to assess the potential impacts of the change. For minor change, this could be a Take5. If the residual risk rating is high or above work must not proceed until a formal risk assessment has been completed.
- A plan is developed by supervision and the work crew that clearly specifies the actions and timescale for the change and the control measures to be implemented. This could be a formal risk assessment or an amendment to the Safe Work Method Statement or JHA.

Refer: [SCEE-BS-HS-WIN-0009 Workfront Management of Change](#)

## 9.36 Hazardous Substances

SCEE shall comply with the relevant Australian Standards and Codes of Practice, SCEE and Hansen Yuncken procedures to ensure the following:

- Transport shall be in accordance with the applicable Transport of Dangerous Goods legislation and shall be performed by licensed contractors
- The storage of hazardous goods shall be in accordance with the relevant legislation and as per the information on the SDS
- First aid requirements shall be supplied as per the information on the SDS

All hazardous substances required for the project shall only be bought on to site after Hansen Yuncken approval, taking into account the degree of risk involved and the operational and economic effects of substitution with less hazardous materials.

A hazardous materials register will be maintained by the HSE Advisor. Safety Data Sheets (SDS) for hazardous materials stored in the place of work will be maintained on site.

Refer: [SCEE-BS-HS-WIN-0021 Hazardous Materials Handling and Storage \(High Risk\)](#)

## 9.37 Risk Assessment and Control of Hazardous Substances

In the event that certain hazardous substances are required, the Project Manager will ensure that a risk assessment is completed prior to the introduction of any such substance or product onto site. Factors such as the SDS, manufacturer's information, nature of work, experience of workers and the potential health effects of each substance are to be considered in the completion of the risk assessment.

Refer: [SCEE-BS-HS-WIN-0021 Hazardous Materials Handling and Storage \(High Risk\)](#)

## 9.38 Storage and Disposal of Hazardous Materials

All hazardous materials or chemicals shall be stored in accordance with the manufacturer's recommendations and statutory requirements in appropriate, correctly labelled containers and shall be accompanied by a SDS which will be made readily available to workers.

Containers of fuel are not to be stored near a flame or any other source of ignition and there will be no smoking in the vicinity. Containers shall be regularly inspected by a competent person.

All equipment excluding mobile plant which holds more than ten litres of fuel and has the potential to leak will be placed on drip trays. Equipment which holds less than ten litres of fuel will be stored suitably to reduce the risk of leaks and spills.

Disposal of hazardous materials shall be in accordance with legislative requirements and manufacturer guidelines. Only contractors with the appropriate license shall transport and dispose of such material.

Refer: [SCEE-BS-HS-WIN-0021 Hazardous Materials Handling and Storage \(High Risk\)](#)

## 9.39 Hydrocarbon and Other Chemical Management

A site register of all hazardous substances with appropriate SDS is maintained and stored as per SDS recommendation and as required under AS 1940:2004. The SDS register will be located in the site office, stores and hazardous goods container. Updates to the register are advised to workers at Toolbox and/or Pre-start Meetings.

The Construction Manager shall ensure that all bunds, storage and fire precautions shall be in compliance with the applicable Dangerous Goods (Handling & Storage) Regulations and AS 1940:2004 Storage and Handling of Flammable and Combustible Liquids.

Containers of fuel will not be stored near a flame or any other source of ignition and there will be no smoking in the vicinity. Containers shall be approved for carrying flammable liquids. Bulk fuel storage areas will be poly lined.

Hydrocarbons and chemicals shall have 110% secondary containment facilities. Authorisation shall be obtained from Hansen Yuncken prior to commencing any job that requires the handling of hydrocarbons or chemical in the vicinity of water bodies and a Job Hazard Analysis (JHA) shall be conducted.

Suitable firefighting equipment shall be available and regularly inspected by a competent person.

Incompatible substances shall not be stored together.

## 9.40 Hydrocarbon and Chemical Spill Management

Hydrocarbon and/or chemical spills shall be managed on site according to the following flowchart.

It is the responsibility of the SCEE Project Manager to ensure that in the event of a spill / release there is immediate access to appropriate clean up equipment and absorbent materials. For example:

- Inert absorbent material such as vermiculite, clay, sand or kitty litter in sufficient quantity to absorb the spill (or these goods would be stored in a bunded area large enough to contain the spill)
- Shovels will be taken to the spill area but will be kept on hand at areas such as fuel storage depot all times
- Barricading/Bunting/Witches Hats

The removal and disposal of contaminated soil shall be arranged in accordance with contractual requirements, disposed of in compliance with site requirements and applicable regulations.

SCEE will ensure that portable generators, welders or stationary engines comply with site standards.

SCEE refuelling trailers used for transportation of hydrocarbons shall be fitted with appropriate spill kits and drip trays. Additional spill kits shall be located at the SCEE stores and made readily available for use wherever hydrocarbons and chemicals are stored and/or used.

## 9.41 Pollution /Emissions

Due to the nature of work performed, SCEE is considered a minor contributor of emissions. Potential sources of emissions have been identified as primarily light vehicles, site based load shifting plant and small internal combustion engines. To ensure that emissions are maintained at satisfactory levels, all equipment is regularly maintained in accordance with manufacturers' recommendations.

The burning of rubber and plastic products, waste oils or any waste material is not permitted. Any inadvertent emission of pollutants within or from the work site will be reported to the HSE Advisor. Areas which are suspect or known to be contaminated sites will be recorded.

## 9.42 Dust Management

In accordance with SCEE and Hansen Yuncken procedures, SCEE will implement reasonable measures to:

- Ensure that a proactive approach to dust minimisation is taken for all work activities
- Avoid nuisance impacts of dust on the workforce and surrounding land users.

The Construction Manager shall make an assessment prior to the commencement of work as to the potential for dust generation, taking into account the:

- Nature and location of SCEE activities on site
- Weather conditions and wind direction
- Potential for dust nuisance on workforce and surrounding land users

The source of any nuisance dust will be identified and where practicable, dust control practices will be modified to reduce or eliminate ongoing risk. The potential for dust generation shall be reassessed periodically.

Dust control measures include:

- Road watering of unsealed access roads and road verges of sealed roads
- Watering of unsealed lay-down areas
- Speed restrictions of roads
- Minimising dust generating activities during dry and windy conditions

Refer: [SCEE-BS-HS-TEM-0002 Dust and Fibrous Materials Management Plan](#)

## 9.43 Protection of Flora and Fauna

SCEE personnel shall comply with the SCEE processes and Work Instructions. This includes the following:

- Necessary approvals will be obtained prior to the removal of native vegetation
- SCEE shall not otherwise remove or damage any trees, plants or animals during the course of work activities and shall minimise the need to disturb any area
- Significant tree communities or individual trees to be retained on site works, will be clearly identified through appropriate tagging
- All work activities will be confined to gazetted sites. Under no circumstances shall any personnel or vehicle travel on other than existing formed roads
- Fauna deaths and feral animal sightings shall be reported to Hansen Yuncken
- No pets or other animals are permitted on the project site
- Firearms are prohibited on site

The site environmental representative will be contacted in the event that:

- Fauna relocation is required
- Roadkill of cattle or fauna occurs (fauna kills will be reported as an environmental event)
- Feral animals are sighted within the Project area

SCEE will assist Hansen Yuncken in fauna preservation and protection throughout the Project.

## 9.44 Soil and Water Conservation

SCEE shall take all precautions to prevent the discharge of any water containing contaminants into adjacent waterways.

Such precautions shall include:

- Maintenance of plant and equipment to be performed in an approved area
- Oil separation traps shall be used before discharge of drainage from maintenance activities
- Liquid waste will be collected in holding tanks and removed from site for recycling
- All oil or fuel spillage shall be cleaned up immediately

## 9.45 Waste Reduction and Disposal

### Non Hazardous Waste

The company places significant emphasis on waste management, waste minimisation and the concept of cleaner production. The SCEE Project Manager is responsible for ensuring that environmental management procedures are followed during the project. The SCEE HSE Advisor will perform the monitoring activities required for effective Waste Management. These activities will include but not be limited to:

- Ensuring waste storage areas are correctly designated and identified
- Ensuring waste items are segregated appropriately
- Ensuring skips and other bins are not overflowing and are covered when necessary
- Ensuring waste storage containers and facilities are correctly labelled
- Promoting waste storage and disposal procedures through Toolbox and Pre-start meetings
- Ensuring all waste is disposed of in accordance with the relevant site procedures, Regulations and Codes of Practice.

SCEE will consult with the site environmental representatives to confirm any site specific segregation and recycling requirements along with alternative waste disposal methods.

Where facilities are made available, the following work materials will be categorised:

- Organic (e.g. food scraps, low grade paper)
- Combustibles (e.g. wood, cardboard, paper)
- Recyclables (e.g. glass, paper, aluminium, plastic bottles, milk cartons)
- Scrap steel
- Batteries (not stored on site)
- Chemical waste
- Oil Waste – including contaminated rags

Refer: [SCEE-BS-HS-TEM-0007 Waste Management Plan](#)

### Hazardous Waste

Where hazardous waste is generated as part of SCEE activities, it shall be disposed of in Hansen Yuncken provided facilities, or if these facilities are unavailable disposed of using licensed hazardous waste disposal contractors. Relevant records of types and quantities of waste removed by this method shall be maintained and reported in line with Hansen Yuncken environmental management procedures and requirements.

Refer: [SCEE-BS-HS-TEM-0007 Waste Management Plan](#)

## 9.46 Rehabilitation

SCEE will ensure that all temporary infrastructure and materials associated with the scope of work are removed from site.

Hansen Yuncken environmental representative shall determine areas requiring rehabilitation prior to demobilisation and review the scope of rehabilitation works. The site environmental representative will also assess the quality of rehabilitation as part of the demobilisation process.

## 10 Emergency Preparedness and Response

SCEE Project Management will follow Hansen Yuncken's Site Emergency Procedures and work in conjunction with Hansen Yuncken Emergency Preparedness and Response plans. Emergency procedures covering specific emergencies related to the scope of works, medical emergencies, fire, natural disaster, bomb threat and cyclone situations shall be documented, practiced and included in worker training to effectively communicate and respond to any workplace event or emergency.

Prior to a project commencing all emergency equipment needs will be determined through the project CRAW aligned with project-specific activities, locations, and hazards (e.g. working at heights, confined spaces, hot works). This shall be undertaken by suitably qualified individual holding at minimum a Certificate IV in Work Health and Safety or a Certificate IV in Emergency Response Coordination.

Emergency equipment required for site shall be assessed using the First aid and Emergency Equipment Assessment (SCEE-BS-HS-TEM-0039). Equipment required to adequately deal with identified emergency scenarios shall be determined, then existing project resources assessed. Gaps in emergency equipment shall be identified and communicated to the project manager for consideration for purchase/hire. Projects are not expected to deal with an entire emergency but shall have the relevant equipment to maintain life and provide support to injured parties until external emergency resources arrive. All emergency equipment will be subject to regular inspection, testing, tagging, and maintenance as per manufacturer guidelines and AS/NZS standards (e.g. AS 1851 for fire protection equipment). Records will be retained for audit purposes.

The adequacy and availability of emergency equipment will be verified during routine workplace inspections, emergency drills, and after any emergency incident. Outcomes will be reviewed by the project and used to drive continuous improvement.

The aims of the emergency procedures are to:

- Decrease the level of risk to life, property and the environment
- Control any incident and minimise its effects
- Provide the basis for training of all people who could be involved in any emergency
- Outline emergency drill schedule, evaluation and review.
- Site specific review is conducted by a competent person to ensure emergency equipment is located and applicable to the scope of works.

SCEE Site Management will coordinate with Hansen Yuncken emergency response team (ERT) to assist in any Emergency response or training drills. The SCEE Project Emergency Response Plan will be developed to integrate with Hansen Yunckens Emergency Response Plans.

Refer: [SCEE-BS-HS-TEM-0003 Emergency Response Plan](#)  
[SCEE-BS-HS-PRO-0029 Medical Services and First Aid](#)

## 10.1 First Aid & Emergency Equipment Risk Assessment

Project Management must ensure that a First Aid & Emergency Equipment Risk Assessment is carried out at the commencement of the project by a suitably qualified individual, holding at minimum a Certificate IV in Work Health and Safety and/or a current First Aid qualification.

Refer: [SCEE-BS-HS-TEM-0039 First Aid & Emergency Equipment Risk Assessment](#)  
[SCEE-BS-HS-WIN-0030 First Aid Risk Assessment Guide](#)

## 10.2 Australian Warning System

The Australian Warning System is the approach to information and warnings during emergencies like bushfire, flood, storm, extreme heat and severe weather.

The System uses a nationally consistent set of icons, as per below.



Each warning level has a set of action statements to give clear and concise information about what to do. Below are some action statements you might see with a warning.

Advice	Watch and Act	Emergency Warning
<p>An incident is active but there is no immediate threat to lives or homes. Be aware and keep up to date.</p> <ul style="list-style-type: none"> <li>• Prepare now</li> <li>• Stay informed</li> <li>• Monitor conditions</li> <li>• Avoid the area</li> <li>• Return with caution</li> <li>• Avoid smoke</li> <li>• Threat is reduced</li> </ul>	<p>There is a possible threat to lives or homes. Take action now to protect yourself and others.</p> <ul style="list-style-type: none"> <li>• Prepare to leave/evacuate</li> <li>• Leave/evacuate now (if you are not prepared)</li> <li>• Prepare to take shelter</li> <li>• Move/stay indoors</li> <li>• Stay near shelter</li> <li>• Monitor conditions as they are changing</li> <li>• Be aware of ember attack</li> <li>• Move to higher ground (away from creeks/rivers/coast)</li> <li>• Limit time outside (cyclone, heat, asthma)</li> <li>• Avoid the area/avoid the flooded area</li> <li>• Stay away from damaged buildings and other hazards</li> <li>• Prepare for isolation</li> <li>• Protect yourself against the impacts of extreme heat</li> <li>• Do not enter floodwater</li> <li>• Not safe to return</li> <li>• Prepare your property (cyclone/storm)</li> </ul>	<p>There is a threat to lives and homes. You may be in danger and need to take immediate action.</p> <ul style="list-style-type: none"> <li>• Leave/evacuate (immediately, by am/pm/hazard timing)</li> <li>• Take shelter now</li> <li>• Shelter indoors now</li> <li>• Too late to leave</li> </ul>

The three warning levels may move up and down to reflect the risk to your life or property before, during and after a natural disaster.

SCEE will actively monitor the TasAlert Emergency Warning System before and during any emergency event and will take all reasonable and practicable measures to protect life and prevent property damage. SCEE will also ensure all personnel are kept informed of current and emerging emergency conditions through timely and effective communications.

## 11 Incident Management and Response

### 11.1 First Aid and Medical Treatment

SCEE Project Management is committed to providing first aid facilities and qualified first aid personnel that are easily accessible to all workers and able to manage minor injuries. Project Management shall ensure that:

- A Qualified first aid person (SCEE Global TNA) to identify first aid equipment and requirements in accordance with relevant legislation, codes of practice and Australian Standards.
- There is a well-equipped first aid box in the site office
- The first aid facilities comply with Australian Standards
- Vehicle first aid kits comply with site requirements
- The first aid facilities are checked regularly and stock replenished as required
- All first aid treatment is to be recorded in the incident register
- First aid training is required to be undertaken by 5% of the site crew  
All electricians will be required to hold a current CPR certification and receive CPR training every 12 months
- All calls for medical assistance are to be made to the site paramedic
- SCEE personnel will be accompanied to the site medic by HSE Advisor or Supervisor

## First Aid Officers

The HY first aid officer(s) shall be identified on the site notice board and at the site induction. A first aider with a current first aid certificate must always be on site, when workers are working.

Where work is to be conducted outside of normal work hours, at least two people shall be in attendance and at least one of these shall be first aid qualified.

## First Aid Room or Facility

The location of the first aid room or facility is to be included on the site layout plan and referenced during the site induction process.

A first aid kit shall be established on the site and located in the first aid room/facility. First aid kits are to be serviced regularly to ensure that the contents are maintained as per the manufacturer's/supplier's requirements.

First aid facilities are to be established in accordance with the Model Code of Practice for First Aid in the Workplace.

Refer: [SCEE-BS-HS-PRO-0004 Event Management and Investigation](#)  
[SCEE-BS-HS-PRO-0029 Medical Services and First Aid](#)  
[SCEE-BS-HS-TEM-0039 First Aid Risk Assessment](#)  
[SCEE-BS-HS-WIN-0030 First Aid Risk Assessment Guide](#)

## 11.2 Critical Incident Management

In the event that SCEE personnel are involved in a Critical Incident,

Project Management shall refer to SCEE-BS-HS-MNP-0001 Crisis Management Plan / Hansen Yunkens Critical Incident Management Plan for the Project. SCEE personnel shall be provided the following in the event of a critical incident:

- Appropriate counselling services for as long as required
- Access to the Worker assistance program
- Notification or contact with their family or next of kin
- Direct access to communications such as phone lines

Refer: [SCEE-BS-HS-PRO-0004 Event Management and Investigation](#)  
[SCEE-BS-HS-MNP-0001 Crisis Management Plan](#)

## 11.3 Injury Management and Rehabilitation

SCEE will provide occupational rehabilitation for every worker who sustains an injury or illness at work. Injury management will involve the coordinated use of medical, psychological, social, education and vocational measures to restore function or achieve the highest possible level of function for persons at work following an injury or illness.

All injury management and rehabilitation activities will be managed and coordinated by the Human Resources Department in accordance with the SCEE Workplace Rehabilitation policy and procedures.

The objectives are:

- To assist the early, safe return to meaningful productive work following illness or injury
- To establish rehabilitation as the normal course of action that begins when treatment is started
- To ensure accurate medical assessment, involvement of rehabilitation specialists when needed and to support the role of the treating medical practitioner
- Site to provide a structured rehabilitation program. Instances where an worker requires assistance beyond first aid, the Human Resources department with the company's rehabilitation provider and/or medical professional (s), shall prepare the rehabilitation program
- To provide appropriate duties where necessary to assist the worker's recovery whilst facilitating an early return to work

Refer: [SCEE-BS-HS-POL-0006 Workplace Rehabilitation Policy](#)  
[SCEE-HR-IM-PRO-0001 Workers Compensation and Injury Management](#)  
[SCEE-HR-IM-WIN-0002 Workers Compensation](#)

## 11.4 Incident Reporting

All workers (including subcontractors) working on the project shall report all incidents to their supervisor immediately.

The SCEE Event Notification Guide shall be displayed in the SCEE Site Office. SCEE Management shall be notified of all events in compliance with the Event Notification Guide.

Events must be reported formally for the following purposes:

- To enable appropriate procedures to be implemented in order to prevent a recurrence
- To enable a timely and appropriate investigation of circumstances of the event
- To enable accurate and timely notification to insurers of any event that may be the subject of a claim
- To comply with applicable legislation

For all events an incident report shall be completed in STEMs by the end of the shift in which the event occurred. The Incident Notification Guide outlines who must be notified if an incident occurs and the required notification time frames.

SCEE shall conduct a "for cause test" for alcohol and/or drugs following an incident which has occurred either in the workplace or at the accommodation villages. SCEE will endeavour at times to undertake this testing however may authorise an external party to assist as required.

Where testing is not achievable by either SCEE or an external party, site is to contact the HR Manager for further assistance.

All event and incident reporting shall also comply Hansen Yuncken Incident Reporting, Investigation, Corrective and Preventative Action and associated timelines.

Refer: [SCEE-BS-HS-PRO-0004 Event Management and Investigation](#)  
[SCEE-BS-HS-WIN-0006 Event Reporting](#)  
[SCEE-BS-HS-GUI-0001 Event Notification Guide](#)

## 11.5 Incident Investigation

All incidents shall be investigated by SCEE Site Manager /Supervisor and HSE Advisor on site as a minimum requirement and include relevant personnel in the investigation as required. The level of investigation required will be at minimum 5 Whys investigation conducted by a trained and competent person. 5 whys investigations will be completed by individuals trained in 5 Whys or higher.

Investigations shall be completed and all associated evidence uploaded to the STEMS incident record within 7 days of the event.

A ICAM investigation will be conducted for all significant events. The ICAM investigation will be facilitated by the HSEQ Manager (or delegate). As a minimum, an ICAM investigation will be conducted for the following events:

- MTI
- RWC
- LTI
- High Potential Near Miss
- Significant Environmental Event

A ICAM investigation may be conducted for other events at the request of the SCEE Executive Safety Committee or Hansen Yuncken. Investigation reports will be provided to Hansen Yuncken as required or on request.

All identified corrective and preventative actions are to be assigned to the appropriate personnel and recorded against the STEMS incident record. All investigations (including ICAMS Investigations and Five Whys) shall be reviewed and approved by the site/senior management via the sign-off process in STEMS.

Refer: [SCEE-BS-HS-PRO-0004 Event Management and Investigation](#)  
[SCEE-BS-HS-WIN-0007 Event Investigation](#)

## 12 Monitoring, Auditing and Review

SCEE conducts monitoring, auditing and review of HSE activities across its operations to ensure compliance with all Legislative, Company, Project and Hansen Yuncken requirements and to identify any performance trends.

### 12.1 Monthly HSE Performance Report

The project HSE Advisor or Supervisor shall prepare a monthly HSE performance report each month and submit to Project Management and SCEE Corporate HSE. Reports shall be

submitted by the 15<sup>th</sup> of each month. The monthly performance report provides a summary of the project's performance in the previous month and allows lead and lag performance data to be monitored and analysed. The monthly performance reports are used to monitor individual site, divisional and company performance.

The monthly HSE performance report consists of:

- HSE KPI's
- Incidents & Near Misses for the period
- Inspections & Audits for the period
- Management Site Visits
- First Swing Initiative Progress
- HazOb's for the period

Refer: [SCEE-BS-HS-WIN-0024 Monthly HSEQ Reporting](#)

## 12.2 Workplace Inspections

SCEE Project Management shall:

- Ensure supervisors and nominated workers are actively involved in conducting daily workplace inspections of all SCEE working areas and in accordance with site and this plans requirements
- Inspections to be recorded utilising Datatrack
- Utilise SCEE's Workplace Safety Inspection / Checklist / Audit tools
- Ensure a copy of all workplace inspections are posted on all crib room notice boards and made available to Hansen Yuncken as required
- Ensure Supervisors complete Daily Workplace Inspections
- Keep all completed checklists for the duration of the project
- Facilitate and encourage joint workplace inspections involving Hansen Yuncken personnel and/or Elected Health and Safety Representatives
- Make regular observations supporting safe behaviours and discouraging at risk behaviours
- Record hazards identified during inspections in Datatrack
- KPI's shall be monitored and reports provided to site by the Corporate HSEQ Department
- Ensure Subcontractors participate in workplace inspections alongside SCEE Supervisors and nominated workers in line with KPI requirements.
- Daily Inspections conducted and recorded to ensure work is being undertaken in accordance with JHAs and SWMS.

## Inspection Requirements

Position	Type of Inspection	Frequency
Project Manager	Weekly Inspection	1 per week
Superintendent	Weekly Inspection	1 per week
Supervisor	5 Star inspection	1 per day
HSE Advisor	Weekly inspection	1 per week
	5 Star Inspection	1 per day

Refer: [SCEE-BS-HS-PRO-0026 Star Inspection Procedure](#)  
[SCEE-BS-HS-LIS-0005 Weekly Workplace Inspection Checklist](#)

### 12.3 Audits

To ensure compliance with SCEE and Hansen Yuncken requirements a formal HSE audit program shall be established to validate whether the HSE systems and activities employed by SCEE and its subcontractors:

- conform to agreed/ specified requirements
- are suitable and effective
- meet statutory/regulatory obligations
- require amendment or improvement

The HSE audit program shall consist of:

- Project benchmark audits (as per HSE & Quality Audit Schedule)
- Site self- assessment audits
- Hansen Yuncken audits (as determined by Hansen Yuncken Audit Schedule)
- HSE system compliance audits (as part of certification audits)

Audits will be conducted in line with SCEE-BS-QU-PRO-0003 Quality and HSE Audits and undertaken by formally trained auditors within the HSEQ team, or by external qualified auditors. The minimum training requirement as outlined in SCEE-TR-TD-GUI-0001 SCEE Global TNA.

Refer: [SCEE-BS-HS-PRO-0026 Star Inspection Procedure](#)  
[SCEE-TR-TD-GUI-0001 SCEE Global Training Needs Analysis](#)  
[SCEE-BS-QU-PRO-0003 HSEQ Audits](#)

## 12.4 HSE Non Conformance and Corrective Actions

All non-conformances or actions arising from monitoring, auditing and review activities are to be managed, tracked and closed out in accordance with the SCEE quality procedures.

All actions arising from HSE monitoring, auditing or review activities are utilised to effect change and improvement in HSE system and methods. The Project Manager must ensure all HSE non-conformances and actions are addressed and closed out within agreed timeframes. Timeframes for the closure of corrective actions are outlined SCEE-BS-QU-PRO-0007 Non-Conformance (including Corrective and Preventative Actions) based on the classification of the actions as non-conformance, opportunity for Improvement or observation.

Action	Description	Action Completion time frame
Major NCR	Is a significant deviation from a specified requirement, standard, procedure, or regulation that poses a serious risk to safety, quality, the environment, or compliance. It indicates a breakdown in the management system or repeated failure to meet requirements. A Major NCR may result in project delays, legal non-compliance, or compromised integrity of the final product or process.	7 Days
Minor NCR	Is a less severe deviation from a requirement or standard that does not pose an immediate risk to safety, quality, or compliance and does not significantly impact the outcome of a product or process. It usually represents an isolated incident or a procedural oversight that can be corrected without major disruption.	14 Days
All other actions/tasks	Preventative/Corrective actions, tasks, observations and opportunities for improvement are proactive measures aimed at enhancing systems, processes, or performance before issues arise. These focus on identifying and eliminating potential causes of non-conformities to prevent their occurrence	21 Days

All identified non-conformances or corrective actions will be entered into the Project Corrective Action Register (CAR). A proposed closeout date, risk rating and a responsible person nominated for actioning the item will be identified in the CAR. This register shall be regularly reviewed by Project Management and made available to Hansen Yuncken as required.

Refer: [SCEE-BS-QU-PRO-0007 Non-Conformance \(Including Corrective and Preventative Actions\)](#)

## 13 Appendix A - Responsibility Statements

### Project Manager / Site Manager

Reports to the General Manager Operations, in SCEE Head Office and is accountable for:

- The overall safety performance of all SCEE workers and subcontractors under their control
- Ensure Datatrack is implemented and used on site
- Ensuring that the necessary procedures are in place to carry out all aspects of the Project Safety Management Plan
- Ensuring that all requirements of this HSEMP, and HSE procedures are fully implemented and complied with
- Providing adequate resources for the implementation of the HSEMP
- Reporting all project progress in relation to safety to SCEE Head Office
- Motivating SCEE staff to pursue their individual responsibilities within the management plans
- Leading by example and conducting regular site inspections to assess SCEE's compliance to the HSEMP requirements
- Supporting SCEE Management and Hansen Yuncken in the resolution of all health and safety issues
- Reviewing event and incident reports and minutes of safety meetings
- Reviewing environmental protection activities including waste disposal
- Reviewing HSE performance at regular intervals and following up any identified issues
- Reviewing the implementation of the HSEMP
- Being visible on site to encourage, monitor and assess all aspects of safe working procedures
- Managing all sub-contractors engaged in their scope of works as SCEE workers
- Ensuring the provision of adequate health and safety resources, services and facilities to effectively implement and manage the health and safety program
- Reviewing Project HSE performance weekly (lag and lead indicators) with the HSE Team
- Participating in Project HSE systems audits as scheduled
- Attending and participating in weekly toolbox meetings
- Undertaking Project field inspections
- Encouraging proactive near-miss and hazard reporting by all site personnel
- Addressing any hazards and risks identified during daily work activities
- Immediately stopping any "Unsafe Behaviour" identified during daily work activities

I hereby certify that I have read and understood my Roles and Responsibilities as outlined in the Safety Management Plan and will comply with all requirements of the plan for the Firmus Data Centre Project.

Name(print)

Signed

Date

### Site Superintendent / Supervisor

Supervisors are to coordinate and direct all project works in their area of responsibility.

Supervisors report to the Project Manager / Project Supervisor and are responsible for:

- Assisting the Project Manager / Project Supervisor and the HSE Advisor in achieving the project HSE requirements
- Understanding the requirements of this HSEMP
- Utilise Datatrack for the recording of HSE information – Hazards/Inspections
- Planning to do all work safely via compliance to the applicable procedures.
- Promoting safety awareness at every opportunity
- Identifying safety training needs and informing management of these needs
- Ensuring personnel are suitably skilled to undertake their assigned work tasks
- Promoting and conducting hazard identification and reporting
- Assisting in the preparation of JHA's/SWMSs with workers
- Conducting safety inspections and initiating rectification of any issues
- Participating in event and incident investigations
- Facilitating prestart and toolbox meetings (which may be prepared by the HSE Advisor)
- Mentoring new starters or workers who have returned to site from leave
- Monitoring subcontractor health and safety performance
- Ensuring that adequate lighting is provided and maintained at all workplaces
- Ensuring there is clear demarcation of all access ways, walkways, storage areas and roads
- Ensuring machine guarding is in place, adequate, and maintained
- Ensuring that all hard barricading is adequate, maintained and installed around penetrations as per site requirements
- Ensuring that all workers who work at height comply with relevant Work Instructions and procedures
- Participating in event and incident investigations
- Undertaking weekly formal inspections of work areas Undertaking daily inspections of workplaces under their control
- Reviewing all JHA's /SWMSs in the field daily
- Ensuring all relevant permits are in place prior to commencement of work
- Ensuring a high standard of housekeeping is maintained at all times
- Removing or isolating any hazard identified during daily work activities
- Immediately stopping any "Unsafe Behaviour" identified during daily work activities
- Assisting and supporting the HSE Advisor with the resolution of safety issues when they arise

Supervisors will be engaged in ongoing observations of worker teams to facilitate the promotion of sound "safe behaviours" and to correct "at risk" behaviours.

I hereby certify that I have read and understood my Roles and Responsibilities as outlined in the Safety Management Plan and will comply with all requirements of the plan for the Firmus Data Centre Project.

Name (Print) \_\_\_\_\_ Company \_\_\_\_\_

Signed \_\_\_\_\_ Date \_\_\_\_\_

## Foreman/ Leading Hand

Reports to the Superintendent or Supervisor and is responsible for:

- Assisting the Superintendent / Supervisor in achieving the project Safety, Environmental and Quality requirements
- Understanding the Management Plans and the essential principals of the project practices and procedures
- Applying their professional skills in a safe manner for the proper execution of the allocated task
- Exhibiting safety awareness for their personal safety and that of their colleagues.
- Maintain very high standards of housekeeping
- Assisting in the resolution of safety matters in a responsive and pro-active manner
- Demonstrating care for the environment including flora, fauna and culturally significant sites
- Using and caring in a proper manner for power tools, mechanical aids, plant, equipment and personal protective equipment provided
- Receiving instruction, training and other assistance and help to carry out the work to both Hansen Yuncken and SCEE standards, adhere to policies, procedures and legislation
- Immediately stop any “Unsafe Behaviour” identified during daily work activities

I hereby certify that I have read and understood my Roles and Responsibilities as outlined in the Safety Management Plan and will comply with all requirements of the plan for the Firmus Data Centre Project.

Name (Print) \_\_\_\_\_ Company \_\_\_\_\_

Signed \_\_\_\_\_ Date \_\_\_\_\_

## HSE Advisor

The Site HSE Advisor reports to the Project Manager/Project Supervisor and has functional reporting requirements to the HSE Supervisor. Responsibilities and accountabilities include:

- Advising Project Management in HSE matters and ensuring the project complies with all health and safety requirements
- Utilise Datatrack for the recording of HSE information – Hazard/Inspections
- Assisting with the review and approval of the HSEMP
- Developing and delivering training programs to project personnel in risk management for potential hazards on the project site
- Initiating and developing safety training to assist with cultural change
- Making recommendations and contributing to improving SCEE's HSE system
- Preparing HSE performance reports for SCEE management and Hansen Yuncken Conducting and assisting with event and incident investigations
- Disseminating safety bulletins on workplace events and incidents
- Self-auditing of the Project Safety Management System
- Conducting worker and supervisor inductions
- Assisting supervisors with conducting risk assessments
- Conducting daily site inspections and weekly documented site inspections
- Managing hazardous materials on site
- Management of workers compensation and rehabilitation on site, in conjunction with head office support
- Attending project safety, and Committee meetings, with the findings being reported to the necessary personnel
- Preparing and presenting safety presentations at weekly toolbox meetings
- Monitoring and reporting on safety initiative programs
- Reviewing the weekly HSE performance (lag and lead indicators) with the Project Manager
- Undertaking daily informal field inspections and documenting any hazards identified
- Conducting, preparing and assisting with risk assessments as required
- Managing SCEE's project HSE requirements
- Assisting in the review and updating of Work Instructions, SWMS and JHA's as required
- Reviewing all permit systems prior to authorisation from Hansen Yuncken
- Inspecting First Aid facilities and replenish stock as required
- Immediately stopping any "Unsafe Behaviour" identified during daily work activities
- Conducting formal JHA reviews
- Implementing SCEE and Hansen Yuncken Safety Management Systems

I hereby certify that I have read and understood my Roles and Responsibilities as outlined in the Safety Management Plan and will comply with all requirements of the plan for the Firmus Data Centre Project.

Name (Print)

Company

Signed

Date

### Workers (including sub-contractors)

Reports to the Superintendent, Supervisor or Leading Hand and is responsible for:

- Being responsible for their own safety and health and that of others in the workplace
- Showing an understanding and demonstrating a commitment to preventing injuries, minimising damage and avoiding interruption to the organisation
- Keeping the workplace in a clean and tidy condition and not interfering with or misusing protective equipment (personal or mechanical) that has been provided or installed for the purpose of safety and health
- Using all personal and mechanical protective equipment issued or supplied as per the workplace requirements
- Attending prestart meetings and participating in pre-start tasks
- Attending safety presentations and toolbox meetings
- Complying with the requirements for the protection of the environment
- Being responsible for their own environmental impact and that of others in the workplace
- Demonstrate environmental awareness
- Working in accordance with SCEE and requirements that have been produced to ensure the protection of the environment
- Immediately reporting all events, incidents or unsafe conditions that occur in the workplace
- Working in accordance with SCEE procedures and requirements that have been produced to ensure the safety and health of all workers and others
- Complying with the requirements of all statutory HSE legislation where applicable
- Participating in Fitness for Work testing as requested
- Adhering to permit requirements
- Assisting management in achieving the project HSE goals and objectives
- Immediately stopping any "Unsafe Behaviour" identified during daily work activities
- Understanding the Health, Safety and Environment Management Plan and Quality Plan as it relates to their position

I hereby certify that I have read and understood my Roles and Responsibilities as outlined in the Safety Management Plan and will comply with all requirements of the plan for the Firmus Data Centre Project.

Name (Print)

Company



# Health, Safety and Environment

Management Plan

---

Signed

Date